

2-1-1999

## BS News

Follow this and additional works at: <https://arrow.tudublin.ie/bsn>



Part of the [Civil Engineering Commons](#), [Construction Engineering Commons](#), and the [Construction Engineering and Management Commons](#)

---

### Recommended Citation

(1999) "BS News," *Building Services Engineering*: Vol. 38: Iss. 2, Article 1.

doi:10.21427/D7ZM50

Available at: <https://arrow.tudublin.ie/bsn/vol38/iss2/1>

This Article is brought to you for free and open access by the Journals at ARROW@TU Dublin. It has been accepted for inclusion in Building Services Engineering by an authorized editor of ARROW@TU Dublin. For more information, please contact [arrow.admin@tudublin.ie](mailto:arrow.admin@tudublin.ie), [aisling.coyne@tudublin.ie](mailto:aisling.coyne@tudublin.ie), [vera.kilshaw@tudublin.ie](mailto:vera.kilshaw@tudublin.ie).

# BSNews

MECHANICAL & ELECTRICAL BUILDING SERVICES



**INSIDE**

**OFCHEC Awards**

**Pumps & Circulators**

**Energy Focus – Great  
Northern Brewery**

**Heatmerchants/Tubs &  
Tiles Buy Out**

# Innovation in Pumping Technology



MVi



MHi

Stainless Steel Vertical and Horizontal multistage pumps for water supply, boosting, sprinkling, irrigation, high pressure wash, fire protection and water treatment (De-mineralisation, Filtering).

- Water supply
- Boosting
- Sprinkling
- Irrigation
- High pressure wash
- Fire protection
- Water treatment
- Boiler Feed

**WILO**  
Pumping-Perfection

WILO Engineering Ltd., Enterprise Centre  
Childers Road, Limerick, Ireland

Telephone: 061-41 09 63 Telefax: 061-41 47 28

# BSNews\*

MECHANICAL & ELECTRICAL  
BUILDING SERVICES

ISSN 0791-0878

Published by:  
Pressline Ltd.  
Carraig Court,  
George's Avenue,  
Blackrock, Co Dublin.  
Tel: 01-288 5001/2/3 Fax: 01-2886966  
eMail: pressl@iol.ie

**Editor:** Pat Lehane  
**Advertisement Manager:** Joe Warren  
**Administration:** Edel Burke

**Origination and Design:**  
Pressline Ltd. Tel: 01 - 288 5001

**Subscription:** One Year — £27

**Printed by:** Kilkenny People.

© All editorial contents and all advertisements prepared by the publishers, Pressline Ltd.

\* Incorporating Irish Heating & Ventilating News.

## Readership Data

Irish Building Services News (formerly Irish H&V News) is Ireland's only Building Services magazine providing coverage of heating, ventilating, air conditioning, refrigeration, sanitaryware, plumbing, maintenance and environmental industries. It is the only publication catering exclusively for these industries and its circulation includes members of the following:- Chartered Institution of Building Services Engineers (CIBSE); The Mechanical Engineering & Building Services Contractors' Association (MEBSCA); The Association of Consulting Engineers of Ireland (ACEI); The Mechanical Engineering Contractors' Association; The Institute of Domestic Heating Engineers (IDHE); The Registered Heating Contractors Association; The Maintenance, Energy & Environmental Technology Association (MEETA) which incorporates energy managers and maintenance managers; The Energy Conservation & District Heating Association; The Institute of Plumbing; The Irish Home Builders Association (IHBA); Builders Merchants/Trade Supply Outlets; Irish Property & Facilities Managers Association.

In addition, Irish Building Services News circulates to independent building services contractors and key executives in industry. Government, Semi-State and local authority bodies. Essentially, our circulation is virtually saturation coverage of all those with an interest and/or involvement in the industry.

## And Still The Acquisitions Continue!

When it comes to business and big finance, the buzz words are acquisitions, consolidation, globalisation, etc. There is a common misconception that this applies primarily to the financial markets and large food companies but, recent events illustrate clearly just how much it applies to the building services sector worldwide, including Ireland.

Just as we went to press it was announced that Ideal Standard had acquired Armitage Shanks. This raises obvious questions in relation to the availability of the brands in Ireland. However, at the time of writing *BSNews* had yet to receive a formal statement and so has decided to withhold comment until our March issue.

In the meantime another multi-national — Wolseley plc, which has operations in the USA, France, Austria and the UK — has acquired Heatmerchants/Tubs & Tiles (page 19).

Neither announcement came as much of a surprise. It was generally accepted for some time that the Blue Circle Group was keen to divest itself of Armitage Shanks, while talk of an impending Heatmerchants take-over goes back to late last year.

### Next Month

Still in the context of take-overs, Dave Sampson left the family business shortly prior to its acquisition by Danfoss last year. Since then he has been finalising plans for a new venture called Energy Watch. *BSNews* talked to Dave for our March issue.

**Our product focus next month will feature:-**

- ◆ Domestic Boilers;
- ◆ Bathrooms & Accessories.

### I N T H I S I S S U E



Pumps &  
Circulators  
See page 4

Moisture in Manufacturing — JS Humidifiers	2
Service & Technical Back-up — Core Strength	3
Pumps & Circulators	4
Energy Focus — Boilers at Great Northern Brewery	14
OFCHEC Awards — Domestic Boiler Installation Excellence	16
Heatmerchants/Tubs & Tiles Takeover	19
Trade News and New Products	21

# Moisture in Manufacturing: The Message is Getting Through

**T**he quality of the air we breathe is important. If its too dry, for example when the heating is turned up, we suffer from blocked noses, runny eyes, and sore throats. Its called low relative humidity and it means that the air is trying to extract moisture from its surrounding – ie you. Nature is intolerant of low relative humidity and tries to replace lost moisture by absorbing it from wherever it can.

the air to raise the humidity. Defensor Mk4, ElectroVap and a new gas-fired humidifier, the JS Condair GHMC range, are all steam humidifiers. The new gas-fired humidifier saves 75% of running costs compared with its electrically-powered equivalent. Any bacteria or viruses are destroyed by heat and this type of humidifier is ideal for use in hospitals, operating theatres, pharmaceuticals, food production and other critical applications where contaminants, impurities, pollen and spores must be eliminated.

## Cold water humidifiers – less energy wasted

JS Humidifiers designed the JetSpray system which features self-catering, non-drip nozzles. Air and water produce a finely-atomised spray which evaporates rapidly to raise the relative humidity, at the same time

creating a cooling effect. It is particularly effective in large industries' sites such as printing and textile works and small production areas, and has been further developed for close control in air handling systems.

Also available from JS is the UltraMist humidifier which generates a fine mist by oscillators vibrating at ultrasonic frequencies. Running costs are as little as 0.052kW per litre of atomised water. UltraMist can humidify directly into the environment or via an air handling system. It is also suitable for spot vapour applications such as chilled food display cabinets. Energy savings are also a major benefit with the JS HumEvap evaporative humidifier. It is designed to fit into new or existing air handling units and features an evaporative matrix which is placed across the air duct and absorbs water. The air flow through the matrix releases large quantities of water which evaporate, raising the humidity of the air.

JS Humidifiers has also just launched the first ceiling-mounted evaporative humidifier. Called the HumiPac, it can be used either singly for small offices or expanded modularly for larger organisations, so enabling any company to provide a comfortable working environment for its staff.

JS Humidifiers full range of humidifiers is available in Ireland where there already are a number of successful installations. These include the electronics industry for microprocessor production, medical and laboratory applications, printing, textile manufacturing, chilled room storage and food processing. A service team covers Ireland and most installations have maintenance contracts. As well as being an "Investor in People", JS Humidifiers has the ISO9001 award and is working towards ISO14001. Getting the humidity right is not just about installing a humidifier. It means choosing one that fits the criteria of "production", "people" and "post installation maintenance costs". In short you need a specialist.

Contact: JS Humidifiers.  
Tel: 0044 1903 850200;  
Fax: 0044 1903 580345.  
email: js@humidifiers.co.uk  
Website: www.humidifiers.co.uk

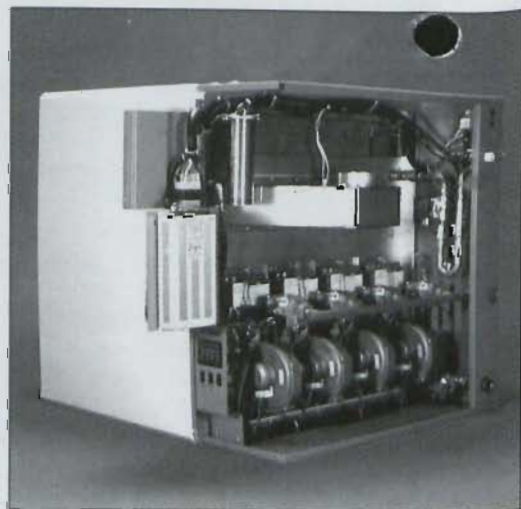


The JS Humidifiers service team: Maintenance contracts ensure humidifiers operate efficiently at all times

Apart from the effect this has on individuals, the effect it can have on industry is catastrophic. Lost production and material wastage from conditions of low relative humidity can run to millions of pounds annually. All hygroscopic materials are affected and the automated processing of these materials becomes difficult

JS Humidifiers plc – with a vast range of humidifiers – helps introduce the right amount of moisture into the air to maintain optimum conditions. The finite control of that humidity and the knowledge of specialised requirements affecting individual industries is its speciality.

JS has a range of steam humidifiers and low-energy, cold water humidifiers. Steam humidifiers use heat to boil water which generates steam. The steam is pure, sterile, odourless and rapidly absorbed into



The latest in steam humidification. The JS Condair™ GHMC 400 gas-fire humidifier. Claimed to reduce steam humidification costs by up to 75%

# Service & Technical Back-Up The Core Strength

**A**s Irish distributor for Carrier and Liebert air conditioning products, Core Air Conditioning undoubtedly has one of the strongest product portfolios in the sector. In the space of a few short years, Core has emerged as one of the market leaders, all the time gaining market share.

However, another factor — other than the quality of the product range — has been instrumental in achieving this level of success.

Underpinning the company's market acceptance and growing reputation is the quality and strength of its after-sales service and technical back-up support systems.

Service & Parts Manager Greg Devitt oversees a nationally-based team of highly-qualified engineers who are specifically trained to commission, maintain and troubleshoot both the Carrier and Liebert product ranges.

Most are also experienced across a wider range of air conditioning equipment, making it possible for Core to offer a comprehensive professional support service for chiller and air conditioning

equipment, and building service system operators.

A brief overview of the scope and extent of the service, parts and technical support systems available from Core Air Conditioning are as follows:—

**Maintenance Contracts** – Core offers a range of maintenance contracts tailored to meet specific needs, direct with the client or through the clients' chosen general maintenance contractor;

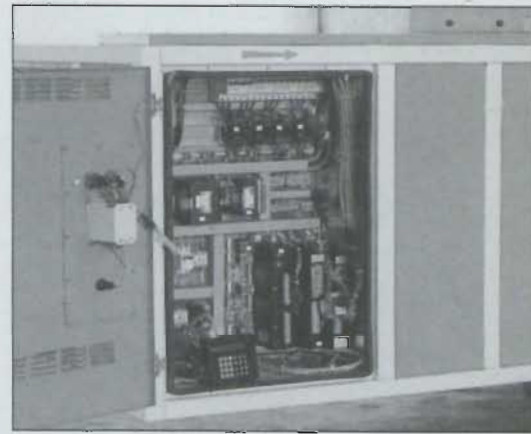
**Out of hours call out** – Contract customers are linked into Core's out-of-hours bureau, enabling it to respond to service needs 24-hours a day, 365 days per year;

**One-off emergency repairs** – Core will restore air conditioning service to any customer who calls. However, the fact is that equipment often breaks down during the most severe hot or cold spells. During these periods, first priority goes to contract customers;

**Retrofit controls packages** – Core offers a range of state-of-the-art retrofit controls packages for Carrier reciprocating and centrifugal chillers, which further enhance efficiency and energy saving;

**Field Personnel** – All field technicians are time-served with many years of experience in the air conditioning industry. They are also equipped with computers and the relevant software to correctly investigate and diagnose equipment conditions;

**Availability of parts** – Core carries a comprehensive stock of both Carrier and Liebert parts at its Sandyford premises. Subject to availability, delivery within the Dublin area is on the same day, and next day for all other areas. If in the event that the part is not available ex-Sandyford, it is supplied directly from the UK overnight;



Attention to detail is important – Core's engineers carry computers and all relevant software to correctly investigate and diagnose equipment conditions

**Carrier compressors** – Core supplies the full range of new and remanufactured compressors for both the air conditioning and refrigeration industries. Remanufactured compressors are rebuilt at the factory and use all new components, except for the compressor casting;

**Site spare parts** – Core provides an on-site survey service to determine and advise on recommended site spare parts. It also provides spare parts manuals relevant to equipment on site, for component identification and part numbers.

Contact: Greg Devitt, Core Air Conditioning. Tel: 01 - 295 3110. eMail: coreac@iol.ie Website: ireland@iol.ie/~coreac



Core's engineers are trained to commission, troubleshoot and maintain both Carrier and Liebert products. The company is also a member of the Refrigeration Service Engineers Society (RSES)

P U M P S

## Holden & Brooke from C&F Quadrant

C&F Quadrant has signed an agreement with pumps manufacturer Holden and Brooke, which will see the Dublin-based company providing sales and service for Holden and Brooke products throughout the whole of Ireland.

Holden and Brooke, a leading pump manufacturer with a pedigree stretching back

know will benefit our existing Irish customers, and help us introduce our products to a wider market. We feel C&F Quadrant has the experience and the reputation to make them our perfect partner in Ireland. We are looking forward to a long and mutually-fruitful relationship".

Holden and Brooke's full product range will be available from C&F Quadrant including the company's new intelligent variable speed pump, the IVS. Employing the latest microprocessor technology, the IVS series offers a cost-effective alternative to

separate pumps and inverters. As the matched motor and inverter are integral, EMC problems are avoided and costs associated with a separate motor and stand-alone inverter system are eliminated.

The inverter controlled pump gives an infinitely-variable flow in response to service demand, and can make manually-

controlled pressure regulating valves a thing of the past.

The reliability of system components is significantly improved as the pump operates at the required speed to match the duty of the system, achieving greater efficiency. Water boosting applications requiring constant pressure control is achieved using just one transducer and inbuilt intelligence in the variable speed pump set. For hot water circulating systems the pump is controlled by a differential pressure transducer.

The IVS is specified for variable loads, such as heating, air conditioning and water boosters, or to maintain specific duty requirements. Pump sizes are currently available in 3-phase supply from 0.55 to 5.55kW; 7.5kW 3-phase supply; and single phase units up to 1.1kW with the same capacity specification, will shortly be available.

Holden and Brooke's IVS range is more compact than other "inverter driven" pumps, requiring less valuable space in plant rooms. The IVS range is as easy to install and as robust as Holden and Brooke's world-famous constant speed pump range. It can also be fitted to existing units.

Contact: C&F Quadrant.  
Tel: 01 - 626 4917.

## Grundfos APB Dewatering Pumps

Based on its long-standing experience as a world-leading provider of solutions within the field of pump technology, Grundfos has developed a range of contractor pumps for dewatering on construction sites.

Thanks to the use of high-quality materials in the pumps – in combination with a number of different motor sizes and capacities – the Grundfos dewatering pumps meet the demand for arduous duties.

The Grundfos dewatering pumps meet the strictest quality requirements. Each individual component exceeds the demands of the harsh real-life environment of construction sites for houses, tunnels and rock caverns, the mining industry, gravel pits, etc.

For pumps operating in these tough applications, it is extremely important that wearing parts can be adjusted or replaced to quickly return the pumps to service in case of abrasion.

Grundfos dewatering pumps are designed with this in mind. The diffuser is adjustable, ensuring that optimum performance is maintained.

Many parts are interchangeable between pump models, which means that servicing is



Holden and Brooke's new intelligent variable speed pump, the IVS

over 100 years, has a long history of serving the Irish market. Recent projects have included pumps for the Jervis Street Shopping Centre and within Dublin Airport for AER Rianta. Holden and Brooke now intends to capitalise on the success.

Peter Wolff, Sales Director, Holden and Brooke says: "We're delighted with this development which we

# Number One in Central Heating





P U M P S

simple and parts always available.

The low-weight pumps are easy to transport and install thanks to the slim design, and the vertical discharge from the top; They are also ideal for narrow sumps or shafts.

Grundfos dewatering pumps are available with an integrated on/off switch for automatic start and stop, depending on variations in the level of the pumped liquid. By using the automatic level control, pump wear and power consumption will be reduced.

Grundfos APB dewatering pumps are mobile and easy to install.

This new range complements the Grundfos extensive portfolio which caters for virtually every conceivable pumping requirement.

Contact: Gordon Barry, Grundfos (Ireland).  
Tel: 01 - 295 4926.

## Wilo – Innovative Designs for the Future

Wilo Engineering Ltd, the Irish subsidiary of the German-owned Wilo Salmson AG Group, was established in 1872. It became involved in the central heating industry in 1880 and since then has pioneered many landmarks in circulator/pump design, development, and production for building services and industry.

On reflection over the last century some significant milestones have been surpassed in growing the worldwide expansion of the company to a turnover in excess of £300 million per annum, serviced from six production centres, including the one in Limerick, and 24 subsidiaries throughout the world. A brief glance at the history of events – as we look forward to the next century with an extensive innovative range of pumps – tracks the significant progress made.

1929 – A patent was granted for the circulating accelerator for incorporation into a pipeline and production was then started;

1952 – The first glandless circulators were produced;

1960 – Major in-house research and development centre set up in Dortmund;

1965 – Overseas subsidiaries and

production centres expanded;

1980 – Production facility set up in Limerick employing 150 people. Irish sales/distribution subsidiary opened to service the Irish market;

1984/88 – Shares in the French pump manufacturers Pompes Salmson and Drouard Tec were acquired;

1988 – Wilo produce the Star 'E' Pump, the first electronic variable speed circulator of its kind, with energy savings of up to 50%;

1993 – The variable speed electronic pump range increased with the introduction of the 'TOP-E' range of variable speed circulators;

1997 – The first mechanical seal-type variable speed pump range 'IPE' with integral micro-frequency converter up to 4kW motor sized introduced.

The next generation more energy efficient glandless electronic range "TOP-E" were introduced incorporating the patented "Fuzzy Logic" principle with additional energy savings of up to 25% achievable.

This year sees the



Wilo TP Range

introduction of a twin-pump version of the mechanical seal 'IPE' variable speed integral frequency converter range called 'DPE', with an increase in range up to motor sizes including 7.5kW, suitable for chilled water or heating applications.

Brief details of other innovative pump developments include:-

Cold water boosters/boiler feed pumps – This range of MHI and MVI stainless steel multistage pumps is also being extended to cover the application of cold water pressure boosting, deionised water/boiler feed/sea water etc. These pumps are also used on the many booster sets assembled in Limerick and working on sites throughout Ireland for



Drainage of rainwater on construction sites with Grundfos

**P U M P S**

drinking water, potable water and fire fighting applications. A variable speed range is also included.

Drainage water and sewage applications – A complete range of waste water/sewage pumps is now available with the recent introduction of the new TS and TP range of specially-designed waste water/sewage pumps. These pump types – ranging from 40mm to 150mm in size – are of stainless steel/composite material construction, specially engineered by Wilo. Advantages are extremely high corrosion resistance and very low weight characteristics by comparison to cast iron pump equivalents. Each pump motor is explosion-proof rated as standard. A complete range of accessories/pipe fittings and control units are also included.

Aqua-Net heat exchanger package – From the manufacturing plant in Oscherslaben comes a complete

package of heat exchanger/pumps and integral controls for applications which satisfy the hot water demands of modern-day systems, both instantaneous supply and in conjunction with a storage vessel.

Pro-Comfort combined heating/hot water unit – This package, which includes a heat exchanger/controls and a heat meter, serves the application of monitoring and controlling the heat input and also instantaneous hot water demand for group schemes such as apartments and domestic dwellings. It is a small, compact, wall-mounted unit which fits neatly into each dwelling.

In the new millennium the Wilo product range will continue to include the most advanced technology available to maximise reduced energy consumption, efficiency; and to further reduce noise levels for the benefit of the end-user and the environment.

Contact: Derek Elton, Wilo Engineering. Tel: 01 - 492 1080; Tony Cusack, Wilo Engineering. Tel: 061 - 410963.



Wilo MHi series

# EURO

Fluid Handling Systems Ltd

MAIN DISTRIBUTOR FOR



Pumps



Hot Water Heaters



Heat Exchangers

**Manufacturers of Europak**

- ◆ Mains Water Packaged Booster Sets
- ◆ Fire Hose Reel Booster Sets
- ◆ Oil Transfer Pumpsets
- ◆ Condense Recovery Sets
- ◆ Pressurisation Equipment
- ◆ Packaged Hot Water Transfer Sets
- ◆ Packaged Steam/Water Transfer Sets

Unit 12, The Westway Centre, Ballymount Avenue, Dublin 12.

Tel: 01 - 450 3884/460 0352/460 0353; Fax: 01 - 450 7634

# Today's professional installers wouldn't stake their reputation on anything less.



## INSTALLERS

Return your  
One-For-One  
Cards Now!

Final Date  
31 March 1999

**GRUNDFOS**

Type UPS 25-50 130 P/N: S9525600  
 230V ~ PC: 9727  
 50Hz  
 2µF

$v_{vol}$	$P_{out}$
0.17	40
0.28	65
0.42	95

IP 44  
 TF 110  
 Class H  
 Max. 10bar

**SELECTRIC**



Today's heating systems don't come cheap. Of course you can compromise here and there, but when long life and reliability, not to mention your reputation as an installer could be on the line, why risk anything less than a Grundfos circulator? Our Selectric and Super Selectric domestic circulators have been Ireland's favourite

choice over many years. Our continual product development programme is your guarantee for high quality, optimum efficiency and long life. So the next time you fit a pump, don't compromise - make sure it's Grundfos.

**GRUNDFOS**



## Euro Fluid – Largest Manufacturer of Packaged Pumping Systems

Euro Fluid Handling Systems Ltd can look forward to the millennium with great satisfaction. From humble beginnings in 1990, Euro Fluid has become the largest manufacturer of packaged pumping systems in the country.

The company, now operating out of a purpose-built facility in Ballymount, West Dublin, has achieved this distinction by offering total solutions on pumping applications to both the design engineer and the mechanical contractor.

With a combined total of over 50 years pumping



Eurofluid mains water and cold water duty assist booster set

experience coupled with a flexible approach to the manufacturing process, Euro fluid can assist in plant selection through to final supply and commissioning, thus ensuring that the requirements of the most important people, the client, are fully met.

The advances made in pump system design incorporating frequency invertors and plc controllers have been incorporated as standard on the packaged equipment being manufactured by Euro Fluid under the "Europak" name.

The packaged equipment offered by Euro Fluid includes:

- mains water packaged booster sets;
- fire hose reel booster sets;
- oil transfer pumpsets;
- condense recovery sets;
- pressurisation equipment;
- packaged hot water transfer sets;
- packaged steam/water transfer sets.

NEW  
IVS  
SERIES  
PUMPS

THE  
INTELLIGENT  
CHOICE



Holden and Brooke introduces a range of self monitoring, self regulating, variable speed pumps.

The new IVS series is designed to complement our world renowned range of fixed speed end suction and in-line centrifugal pumps.

All pumps in the IVS series have "micro-tech" intelligence built-in – this results in far greater efficiency with dramatic savings on energy and running costs. Pressure surges are eliminated and component wear is reduced.

All this from an integrated compo unit, which is no larger than a standard pump providing for faster installation.

Good news for existing Holden and Brooke pump users, IVS technology can often be retrofitted.

For a brochure and to find out more call our pump-action hot line today



**0161 223 2223**



Innovation shaped by experience

Wenlock Way Manchester M12 5JL Fax: 0161 220 9660  
www.holden-brooke.com e-mail: marketing@holden-brooke.com

Also in London - Glasgow - Belfast

P U M P S



Eurofluid fire hose reel booster

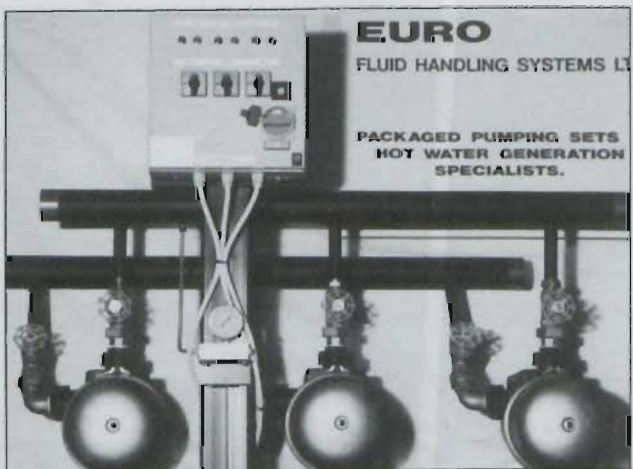
Prestigious projects Euro Fluid has been involved with include – Allergan Pharmaceutical; Wyeth Medica; Norton Pharmaceuticals; Irish Life Boilerhouse Upgrade; Bausch & Lombe; Financial Services Centre; Croke Park Re-Development; The Merrion Hotel; Guinness Power House; and ACC Bank HQ.

With the support of major suppliers like Grundfos Pumps – for whom Euro Fluid are a major distributor; Swep heat exchangers; ACV hot water generators – and

continued investment in modern technology – Euro Fluid will consolidate its dominant position in the marketplace, and continue to supply quality equipment.

Along with the general celebrations being planned for the Year 2000, Euro Fluid has cause to have its own special celebrations ... 10 years offering quality, tailor-made solutions to meet customers' specific pumping requirements.

Contact: Bernard Costelloe, Euro Fluid Handling Systems. Tel: 01 - 460 0352.



Eurofluid cold water and mains water 3-pump variable speed

## BOSS ... Introduction to Pressurisation

Heating and chilled water systems traditionally use an open tank to accommodate expansion within the system in the event of a rise in temperature. This method has several disadvantages which include:- water has to be stored at high level; air is allowed into the system causing corrosion; use of high-temperature systems is limited.

These limitations gave rise to the design of the "Sealed System" where the expansion of water in the system is accommodated within a sealed vessel, eliminating the need for an expansion tank at high level and providing other benefits, including:

- Virtual elimination of corrosion as no air is allowed into the system under normal operating conditions;
- Higher design temperatures, allowing smaller pipework and radiators;
- Compact equipment size reduces space requirements;
- Quicker installation;

– Equipment can be sited in the boiler house for ease of maintenance;



A comprehensive range of portable pumps offering a complete solution for the pumping of clean or dirty water. All models are of robust construction, quiet in operation, reliable and versatile, allowing confident use in fixed or portable applications with automatic float switch operation, if required. Details from BSS Ireland

– No problems with freezing pipe work and tanks in the roof space.



BOSS Pressfills are quality-engineered pressurisation units of a robust compact design. Models available include the basic Type AX, the fully-packaged cabinet-housed Type PF, the microprocessor types PFM; and Mini Pressfill compact units. Details from BSS Ireland.

This equipment is designed for use on sealed systems with no draw-off points. If taps, showers, etc are included

P U M P S



BOSS one-pump booster set from BSS Ireland

within the system, a pressure booster set should be used.

For light commercial central heating installations a full

pressurisation set would be excessive. If a pressurised system is required, BSS recommends the compact, space-saving, wall-mountable BOSS MX Mini-Pressfill. This performs the same function as larger sets, but is more suited to light commercial applications.

Contact:  
John Brophy,  
BSS Ireland.  
Tel: 01 - 454 1966.

## Holfeld Packaged Pumpsets



Holpak 3-pump variable speed packaged pumpset, as designed and manufactured exclusively by Holfeld Pumps. This particular unit is installed in a high-profile international hotel in Dublin. Contact: Alison Kirwan, H R Holfeld (Hydraulics) Ltd. Tel: 01 - 288 7361.

# HOLFELD PUMPS



## Fluid Handling Specialists

A member of the H.R. Holfeld Group

### One source supply capability

*Holfeld Pumps design and supply advanced pumping technology and manufactures the HOLPAK bespoke range of pumpsets and pressure booster pump systems. Exclusively representing and distributing internationally recognised brands. Extensive diverse applications, product expertise and technical support. Service, reconditioning and workshop facilities manned with trained personnel in Dublin and Belfast.*

### Fluid Handling Specialists To Industry

The leading supplier of pumps for almost half a century.

2-4 Merville Road,  
Stillorgan  
Dublin, Ireland.

Telephone +353 1 288 7361  
Facsimile +353 1 288 7380

Unit 10, Blaris Industrial Estate  
Altona Road, Lisburn  
County Antrim BT27 5RU  
Northern Ireland

Telephone 01846 677523  
Facsimile 01846 660263

Glastonbury House  
74 High Street, Billingshurst  
West Sussex RH14 9QS

Telephone 01403 785625  
Facsimile 01403 785587

P U M P S

## Myson Pumps – Number One for Quality and Reliability

### Myson's Compact Range

The Myson pumps "Compact" range of

vent automatically on initial start-up, avoiding damage to the shaft and bearings;

range offers a comprehensive selection of pumps as cast iron light commercial

circulators or secondary hot water commercial circulators.

The Myson "SE" pump range has a host of special features,



The Myson Compact range of variable speed domestic heating circulator pumps

domestic heating circulators offers the installer assured reliability, high performance, and ease of installation for all domestic heating systems.

The following are some of the special features of the Myson Compact range:

- It is a 3-speed pump with a static head range of 2-6 metres;
- A safe and sure manual re-start knob frees the pump should it become stuck due to system debris, while providing a secure means of venting it manually;
- Larger terminals with clearly-marked captive screws make connection quick and simple;
- Myson "Compact" pumps are designed to

- The motor head can be replaced or repositioned without moving the pump from the system;
- The start-up torque on the lower speeds of the range is nearly twice that of competing products in the same class;
- All Myson "Compact"

including:-

- It is available in 1 1/4", 1 1/2", or 2" as cast iron and from 1" up to 2" in bronze;
- Using disc induction motor technology, these pumps deliver a high ratio torque for effortless low speed start-up;

a range of high-performance shower pumps for boosted water pressure. The range is as follows:-

**Aquaboost Single** – Suitable for siting between the mixing valve and shower head, these units are supplied with installation kit, comprising factory-fitted flow switch control and pre-wired motor;

**Aquaboost Plus Twin** – Suitable for more complex shower heads and accessories requiring controllable power, these units are supplied with installation kit including two factory-fitted flow switch controls, pre-wired motor, and as four hose connectors.

With a specialist team of field and in-house technical engineers to take customer queries, Potterton Myson provides



The Myson Bronze range of secondary hot water commercial circulators

pumps are guaranteed for 30 months from the date of manufacture, a full year over the industry norm.

### Myson's "SE" Range

The Myson "SE" pump

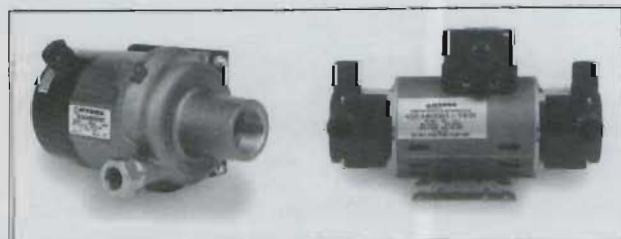
- The use of a single static "O" ring seal eliminates the need for time-consuming, routine seal maintenance;
- A precision-manufactured double-shrouded impeller provides smooth, flexible output whatever the speed and at temperatures of up to 95°C.

expert advice on specification and installation. Full after-sales service and spares are also available and these are complemented by the company's unique training facility which is located at its headquarters on the Belgard Road, Dublin.

Contact:  
Suzanne Shanley,  
Potterton Myson (Irl) Ltd.  
Tel: 01 - 459 0870.

### The Myson Aquaboost Range

Myson also manufacture



The Myson Aquaboost range of high-performance shower pumps for booster water pressure



*for all your pumping requirements  
Circulators, Pumps, Boosters ...*



*... just add water!*

White Heather Industrial Estate, 301 South Circular Road, Dublin 8. Tel: 01 - 416 5100; Fax: 01 - 416 5165  
eMail: 1930.sales@bssgroup.com

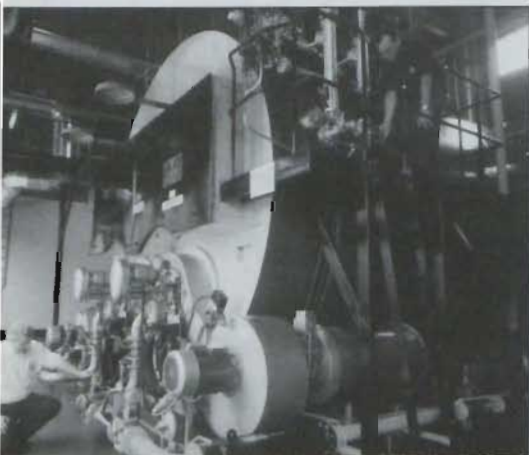


# Boilers at Great Northern Brewery

In most industrial plant, the boilerhouse is at the heart of the energy supply system. Even in situations where electricity is becoming the dominant energy source, the boiler system remains the most tangible point where energy is brought onto the site as fuel and converted into a useful service for the tasks of the plant.

Recognising this, the Irish Energy Centre has always placed considerable emphasis on good boilerhouse technology and practice in its industrial support programmes.

The Great Northern Brewery has been a regular participant in the Irish Energy Centre's National Boiler



A section of the Great Northern Brewery boilerhouse which won the Industrial Boilerhouse of the Year Award 1997, and again in 1998

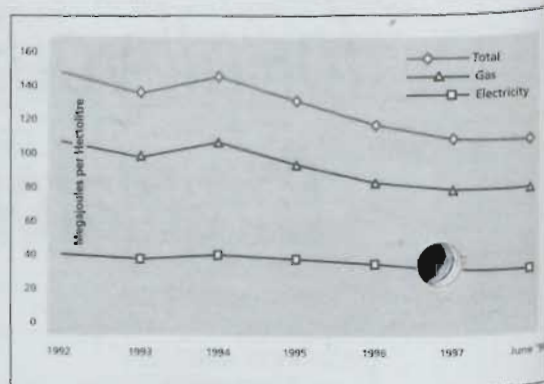
Awards and has won the competition for Industrial Boilerhouse of the Year Award in 1997 and again in 1998. This is a clear sign of how successful their efforts to develop a state-of-the-art, efficient boiler system have been.

Great Northern Brewery has been in Dundalk since 1897, and was re-opened by Guinness as its Lager Brewery in 1957. Since the mid-1980s, the plant has been extensively refurbished and updated, and is now producing a total of 250 million pints of beer a year, covering a range of products including Harp, Carlsberg, Satzenbrau, and several others.

The site boiler system consists of three boilers, each with a rating of 35,000 lbs/hr, operating at 7 bar. The boilers are 23 years old and were converted from heavy fuel oil to natural gas in the late 1980s. The boilers are fitted with Saacke burners with Direct Digital Combustion Control (DDC) and Oxygen trim. Sequencing controls are used to control the on times of the boilers.

In the last few years the brewery has undertaken many projects to enhance performance of the boiler system, including:-

- All the FD fans and feedwater pumps have been fitted with variable speed drives (VSDs) and these are yielding substantial energy savings and have dramatically reduced the noise levels in the boilerhouse;
- The installation and commissioning of in-line flue gas analysers which are now part of the Oxygen trim system;
- Rationalisation of all pipework in the boilerhouse (including removal of redundant pipework);
- All pipework, valves and flanges have been re-insulated and clad



Energy usage per hectolitre of beer produced at Great Northern Brewery

- to a very high standard;
- Upgrading of the water treatment chemical handling and dosing systems;
- The purchase of equipment for measuring NOx & SOx and other emissions from the boilers;
- Resurfacing and painting of the boilerhouse floor;
- General redecoration of the boilerhouse.

There is an extensive monitoring and targeting programme in place and a daily energy report is printed out each morning which is checked for any anomalies. The data collected in the boilerhouse is used to great effect in producing energy/production indices. The effectiveness of monitoring and targeting, and the high level of management commitment to the boilerhouse, is very evident in the steady downward trend in energy consumption per hectolitre of product. The plant's energy consumption per unit of output in 1997 was an impressive 17% better than that of 1995.

In a recent hygiene audit carried out in this boilerhouse as part of the compliance requirement for ISO 9002, a score of 96% was recorded. The missing 4% was deducted because there was a "bucket and mop" in the boilerhouse!

All of these efforts have been driven by Peter McCarthy, Engineering Supervisor at the plant. As well as all of the improvements that have been made in the boilerhouse, Peter has also been working on increasing energy efficiency throughout the plant.

Having won the competition for Industrial Boilerhouse of the Year in 1997, this company continued in its efforts to ensure that its boilerhouse was operating at optimum efficiency, and hence won the competition for a second year running. Great Northern Brewery has realised the rewards

available from the attention given to its boiler system, and is now setting an industry standard.

The average steam boiler in Irish industry operates with a combustion efficiency 2% below optimum efficiency, and this is just the tip of the iceberg when it comes to just how much energy is being lost needlessly, and how much money is being wasted. Recent studies carried out under the umbrella of the "Steam Boiler System Evaluation Scheme" indicate that the average savings available are of the order of 10% when all aspects of boilerhouse operation are taken into consideration. The payback associated with achieving these savings are generally under two years.

Key people in industry, including energy managers, boiler operators,

and many others, recognise the importance of efficient boiler systems and know just how much energy is there waiting to be saved. The Irish Energy Centre will continue to target boiler systems as an important element of energy usage and energy efficiency in industry.

The Boiler Awards are taking place again this year, and the number of entries is expected to continue to grow. The closing date for nominations is 26 February 1999. Further information on the "National Boiler Awards" and the "Steam Boiler System Evaluation Scheme", together with all the other support available to industry on boilers and other aspects of good practice, are available from:-  
**Virgil Bolger**  
**Irish Energy Centre.**  
**Tel: 01 - 836 9080.**




## Series 'E' Gas & Oil Fired Steam Boilers

- ◆ Fully packed fuel fired steam boiler
- ◆ Nine sizes: 96 – 960 kg/h. (F&A 100°C)
- ◆ 5 year warranty.
- ◆ Constructed to BS 2790 1992 as standard. Other specifications available.
- ◆ Fulton Gas, Oil & Dual-Fired
- ◆ Operating pressures up to 10.34 bar.

### Concord Boiler Engineering Ltd

Marrowbone House, Marrowbone Lane, Dublin 8.  
Tel: 01 - 453 2727/8/9; Fax: 01 - 453 3849

O F C H E C A W A R D S

# OFCHEC Awards for Excellence

**A**t a dinner held at the Burlington Hotel in Dublin before Christmas, Joe Jacob TD, Minister of State at the Department for Public Enterprise, presented awards to the winners of the first All-Ireland Central Heating Efficiency Competition (OFCHEC).

The new competition, open to installers of oil-fired domestic heating both north and south of the Border, attracted over 50 entries in nine categories, and was organised by the oil heating trade association OFTEC.

The dinner was sponsored by Kingspan Group. The Minister warmly welcomed the guests from Great Britain and the North, who included Patricia Lewsley, SDLP Member for Lagan Valley in the new Assembly.

Certificates and prizes were presented to Don Moloney of Lagganstown, Co Tipperary; Joe McSweeney & Sons of Mallow, Co Cork; Scully Heating and Plumbing of Birr, Co Offaly; and Victor Young of Callan, Co Kilkenny. Winners from the North were United Boiler Services of Belfast; David Nelson Heating and Plumbing, Moneyrea; Hinds Heating of Portaferry; Michael McGonigle, Strabane; and Warmfloor Heating of Omagh. Irish Shell donated 1,000 litres of heating oil to the householders in whose homes the winning systems were installed, and Teddington Controls presented a fire valve to each winning entrant.

The competition was held in conjunction with campaigns run by governments in the Republic and in Britain to raise the standards of home heating systems, cut fuel consumption and save money. Its aims are to reward excellence and encourage oil heating installers to both recommend and install modern energy-saving controls, and provide their customers with a professional service by trained technicians.

"At the moment the level and quality of control systems installed on domestic heating systems is poor. In spite of building controls, many systems are still being installed with only a boiler thermostat and no control on room temperature ... if all oil-fired boilers and cookers currently installed in the domestic sector were controlled and serviced properly, savings of the order of 10% would be achievable", said Minister Jacob.



**Richie Lowry of Kingspan Group welcomes Joe Jacob TD and Patricia Lewsley**



**LEFT: Joe McSweeney of Mallow, Co Cork received a Firebird Boiler from Richard Sullivan (right) and a Tyrrell oil tank**



**RIGHT: Bill McIlveen of United Boiler Services, Belfast (third from left) receives his winner's certificate. Bill was also presented with a boiler from Trianco Redfyre and an oil tank donated by Ar-Met Plastics**



**LEFT: Colin Sutherland, Oftec's Technical Director, addressing the winners and industry guests at the dinner**



**RIGHT: Dr Frank Bergin of Irish Shell hands over heating oil vouchers. Irish Shell donated 1,000 litres of oil to each householder in whose home a winning system was installed**

# Danfoss

## VLT® 6000 HV~AC Series



- ▲ Very compact, bookstyle design to save on panel space
- ▲ **A**utomatic **E**nergy **O**ptimizer for reduced running costs
- ▲ Built-in RFI Filter to meet EN55011 IA
- ▲ Designed to switch on output as often as needed
- ▲ Extra long cable connections up to 300 metres (unscreened)
- ▲ Galvanic isolation on all inputs, outputs and control card
- ▲ Automatic Motor Adaptor ensures optimised motor torque performance
- ▲ No derating of motor required

### VLT® ~ The Real Drive



### J. J. SAMPSON & SON LTD.

Member of the Danfoss Group

Nangor Road Business Park, Dublin 12.  
 Tel: 01 - 626 8111; Fax: 01 - 626 9334  
 e-Mail: sampson@indigo.ie

O F C H E C A W A R D S



Minister Joe Jacob TD, with Lex Brown (NI Housing Executive) and Patricia Lewsley, Member for Lagan Valley, NI Assembly



Gabriel McArdle of Kingspan demonstrates his company's tank to the Minister and Patricia Lewsley



Henry McAuley of Balmoral Group with the Minister and Patricia Lewsley



Minister Joe Jacob TD, with Patricia Lewsley, NI Assembly Member; prizewinner Victor Young from Callan, Kilkenny, and Owen Conway of Waterford Stanley, who presented Victor with a crystal trophy



Alec Crosse of Gerkros Boilers (right) presented Don Moloney of Lagganstown (third from left) with a Gerkros boiler. Don also received a tank from Balmoral Group



The Minister gives Dermot Hinds of Hinds Heating, Portaferry, his certificate. Philip Cousins of Warmflow Engineering presented a boiler from his company. Dermot also received a tank from the Tyrrell range



Stephen Grant of Grant Engineering (right) was there to present Pat Scully of Scully Heating & Plumbing, Birr, with his prize of a Grant Combi boiler. Pat also received a Kingspan oil tank



Joe Jacob gives Brian McCann of Warmfloor Heating Ltd of Omagh his certificate. Dave Brettle of Aga-Rayburn (right) presented Brian with a set of Aga cookware



As well as a certificate, David Nelson of David Nelson Heating and Plumbing, Moneyrea received a boiler from Trevor Mustard of Worcester Heat Systems (far right) and an oil tank from the Kingspan range



LEFT: No wonder Michael McGonigle of Strabane is smiling ... his prizes were a boiler from Worcester Heat Systems and an oil tank donated by the Balmoral Group

# Heatmerchants/Tubs & Tiles Sold

**T**he acquisition of Heatmerchants/Tubs & Tiles by Wolsley Centres was formally concluded and announced on 21 January last, finally bringing to an end the many rumours about the deal which have been circulating within the business for some months.

Wolsley Centres Ltd is the UK subsidiary of the massive Wolsley Plc, and is perhaps best known in Ireland for its chain of Plumb Centre branches in the UK.

Heatmerchants Ltd is Ireland's largest supplier of domestic, heating and plumbing equipment with a nationwide network of 11 branches at Athlone, Sligo, Limerick, Cork (2), Waterford, Kilkenny, Dublin, Navan, Galway and Tralee. All branches are serviced by a central warehouse located in Athlone.

Heatmerchants was founded in 1978 and initially operated from Kilkenny, serving the heating and plumbing market as a specialist supply service. Tubs & Tiles, the bathrooms, tiles and wood flooring retail arm was added some 10 years later, the

concept being gradually introduced to every branch over a period of years.

The past 12 months has seen this concept further enhanced with the implementation of a comprehensive programme of improved product ranges and displays, a specialist wood flooring section being added to each outlet.

The Company (Heatmerchants/Tubs & Tiles) employs 250 people nationwide and had a turnover of £33 million in 1998. The seven shareholders of heatmerchants were all Executive Directors and will continue as such in their respective roles:-

James F Casey – Chairman

Michael F Lucitt – Managing Director

Jim Carey – Financial Director

Eugene Carty – Regional Director

Brian McTernan – Regional Director

Charlie Soden – Regional Director

Michael O'Brien – Purchasing Director

Wolsley Plc had a turnover of £4.7 billion in the 12 months of 31 July 1998. Its principal activities are the

distribution of plumbing and bathroom materials, central heating equipment, pipes, valves and fittings in the UK, France, Austria and the USA. Additionally, in the UK, it distributes heavy-side building materials and operates tool hire centres, while in the USA the group distributes timber and other building materials. The group also has significant interests in the manufacture of burners, boilers, electrical components, the distribution of photographic equipment and tractor parts and accessories. It also manufactures engineering and plastic products.

In the UK Wolsley Centres Ltd operate from over 750 branches, including the well-known chain of Plumb Centre Branches. Other operations include Builder Centre, Drainage Centre, Controls Centre, Pipeline Centre, as well as HRPC (Heating Replacement Parts & Controls). Wolsley Centres also has a business called "Just Bathrooms" which is similar to Tubs & Tiles.

In a message to staff the Directors said: "There will be no negative change to employment as a result of the acquisition. We are confident that this initiative is the right one for Heatmerchants/Tubs & Tiles at this time, and will enable the growth of our business to accelerate at an even faster pace than heretofore. It will also include new dimensions as we emulate their operations in the UK, giving new and varied opportunities for the personal growth of all employees within the company. Investment in an extensive programme of expansion will commence immediately".



Heatmerchants/Tubs & Tiles purpose-built headquarters in Athlone

# Thermo Systems



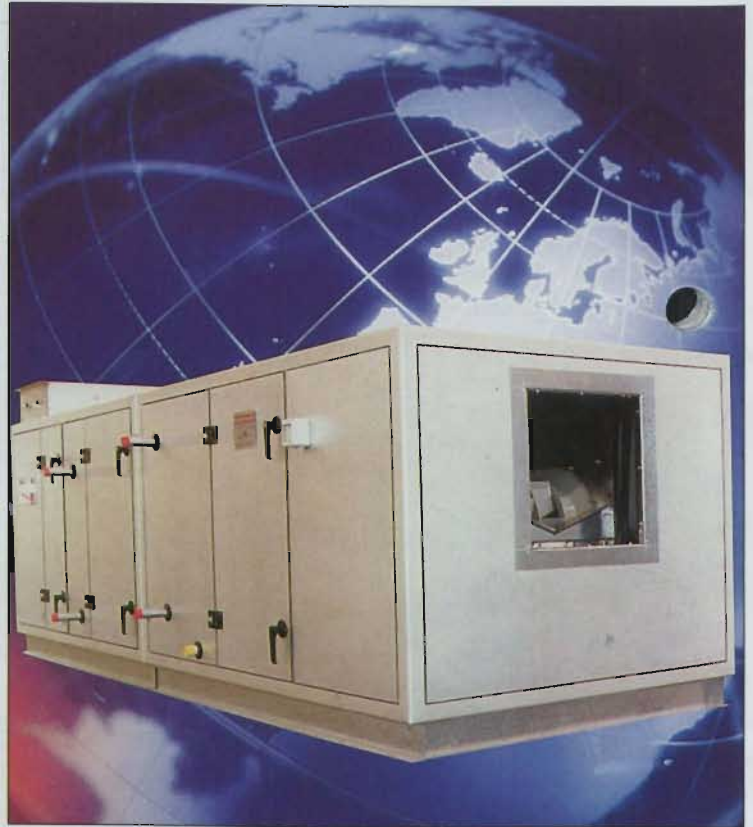
## DISTRIBUTORS IN IRELAND FOR:-

### AAF International Air Handling and Cleanroom Equipment

- ◆ Unique solid panel construction air handling units
- ◆ 80% more energy efficient than glass fibre panelled units
- ◆ Three times design life of fibre panelled units
- ◆ Fan filter units using EC motor technology
- ◆ Integrated cleanroom systems and equipment

### McQuay International HVAC Chillers

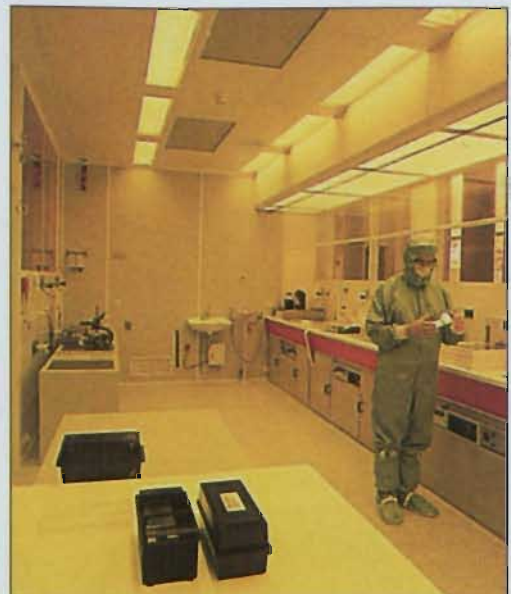
- ◆ Single chillers to 10,000 Kw
- ◆ Single Screw oil free and virtually maintenance free chillers
- ◆ Worlds most efficient reciprocating chillers
- ◆ Worlds most efficient centrifugal chillers
- ◆ Refrigerants R22, R407C, R134A, R410A



ABOVE: AAF Easdale air handling unit from Thermo Systems



ABOVE: McQuay International single screw chiller from Thermo Systems



RIGHT: AAF cleanroom equipment and systems from Thermo Systems

## Thermo Systems

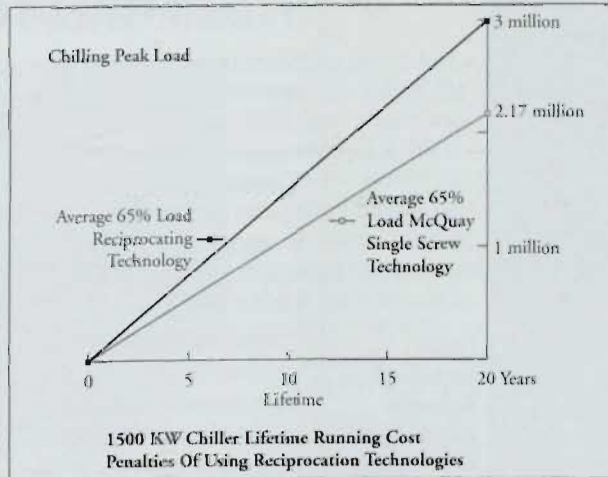
<https://arrow.tudublin.ie/bsn/vol38/iss2/1>  
DOI: 10.21427/D7ZM50

DUBLIN: Thermo Systems Ltd, Unit 2, Whitechurch Road, Rathfarnham, Dublin 14. Tel: 01 - 492 5340; Fax: 01 - 492 5342;  
E-mail: [info@thermosystems.ie](mailto:info@thermosystems.ie)  
CORK: 204 Bruach na Laoi, Cork. Tel: 021 - 320023; Fax: 021 - 320023.

## McQuay Oil-Free Single-Screw Chillers

With optimum performance, efficiency and cost-effectiveness now the prime considerations in all aspects of the building services sector, independent ASHRAE findings support the view that McQuay oil-free, single-screw chillers are the best option when it comes to cooling.

The accompanying graphs are self-explanatory and clearly illustrate the reasons why specifiers choose McQuay for cooling requirements. Among the many benefits offered by McQuay oil-



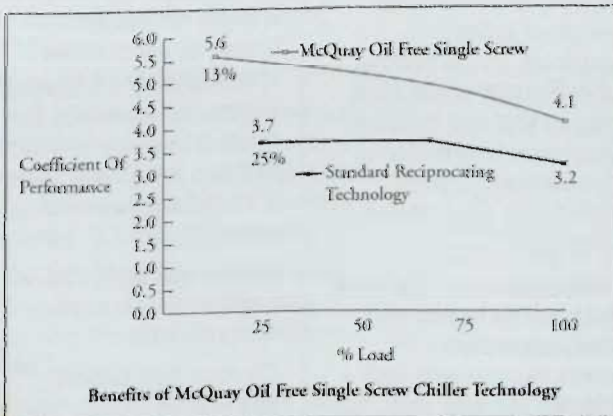
free single-screw chillers are:—  
 Provide savings of £700,000 over a 20-year period of operation for the

lifetime of a 1500kW chiller.  
 Offer up to twenty times the bearing design life of reciprocating chillers;

Offer four to five times the bearing design life of dual-screw chillers;  
 Being oil-free means no need for oil changes;

Contact: Aidan Lynch, Thermo Systems.

Tel: 01 - 492 5340;  
 Fax: 492 5342; email: info@thermosystems.ie



## Concord – For Quality Boiler Products and Advice

Concord Boiler Engineering Ltd — the installation, service and boiler specialists — has a long-standing reputation within the building services sector as a supplier of quality boiler products, ancillaries, and service support packages.

Highly-qualified, fully-experienced technical staff advise on boiler system selection, carefully devising the most appropriate package solution for each particular installation. A detailed breakdown of all the components within the package is provided, be it anything from a 50 lbs/hour boiler right up to a 45,000 lbs/hour boiler.

Major overhaul work and

## You're Busy ... So Mark Éire is coming to you!



Like the song "Getting to know you ..." Mark is on the move with a nationwide roadshow. Over the coming months the Mark Roadshow will be at a location near you, or will call to your premises if you prefer.

The display is made up of a Calflo housing, which is produced using ALMg3 quality. This

does not tarnish and still looks like new after years in use. Within the housing, one can see the Calflo controls and burner fitted. The Calflo is a direct-fired unit. Also within is a GS unit gas air heater; Tanner water unit air heater; Eco fan de-stratification unit; Infra radiant tube; Infra Line radiant tube; Flue systems; etc.

If you want to visit the Mark Roadshow when it is in your vicinity, or want Mark to visit you, contact Majeilla Hayes at Tel: 026 - 45334; Fax: 026 - 45383; eMail: sales@markeire.com





Fulton Electropack Automatic Electric Steam Boiler (15k to 100kW) which is ideal for chemical, pharmaceutical and process engineering applications. Details from Concord Boiler Engineering Ltd.

repairs are carried out by Concord Boiler Engineering Ltd's skilled engineers, either on site or at the company's well-equipped Overhaul & Repair Centre. The Field Service Team members carry sufficient spares to deal with the most common faults/breakdowns across a vast range of oil and gas burners.

The company also stocks a comprehensive range of safety valves, mains steam valves, water feed check valves, boiler gauge mountings and blowdown valves.

All work — be it on site or at the Overhaul & Repair Centre — is carried out to BS 2790 Standard and also meets the

requirements of insurance companies and certifying authorities.

A wide range of products are also manufactured to meet customers' specific needs. These include chimneys, oil and water storage tanks, and pressure vessels. Control equipment is also built to suit individual boiler specifications.

A unique service is the boiler hire facility available from Concord Boiler Engineering Ltd. Boilers can be delivered and installed on site at short notice, thereby saving time and keeping unforeseen factory downtime to a minimum.

Contact: Jim Byrne, Concord Boiler Engineering Ltd. Tel: 01 - 453 2727.

## 'Point and Press' Thermometers

Manotherm has added two new Land Infrared models with an RS232C digital output to its Cyclops Mini Series of "point and press" portable, non-contact thermometers — Mini Laser+ and Mini View+.

The digital output allows users to download temperature data to a PC or data logger for later study and analysis, or to print out the information as a hard copy.

Both thermometers are easy to use, providing fast, accurate and reliable spot temperature measurement at a distance in a wide range of industrial contexts, from checking the integrity of electrical equipment and building insulation to monitoring production plant for preventive maintenance purposes.

Mini Laser+ uses the latest technology to pinpoint and define the measurement area with a circular red laser light. All the user has to do is to aim the thermometer, press the trigger and read

the temperature on the bright external back-lit display, which is activated automatically in low conditions.

Mini View+ has through-the-lens sighting with temperature simultaneously displayed in the viewfinder.

Both thermometers have a temperature range of -50 to 500°C, fast response of 0.8s; a choice of continuous, peak or monitor modes is included, along with an audible/visual alarm providing an out-of-range warning.

A single AA alkaline battery is sufficient for approximately 18 hours of continuous operation (six hours if the laser targeting facility is used), and there is an automatic power saving feature.

A new data logger DL-10 is also available as an optional extra.

Contact: Bob Gilbert/ Brian Harris. Tel: 01 - 452 2355; Fax: 01 - 451 6919. eMail: manotherm@tinet.ie



Land Infrared "point-and-press" thermometer from Manotherm

## Danfoss Motor Speed Control for the Low Power Market



Danfoss VLT 2800 series (2 VLT 2803-2815 together with a VLT 2822 - 2840) from J J Sampson & Son Ltd

"The Danfoss VLT® 2800 series of frequency converters offers high quality at an affordable price, and a compact size that fits in anywhere", according to John Sampson of J J Sampson & Son Ltd.

Compact in design and incorporating many new features, converters from Danfoss marks a full technological update of motor control solutions for the low power market, 0.37kW up to 7.5kW.

The VLT 2800 is a multi-purpose drive for industrial automation. Among the obvious applications are:

- Applications with variable torque, eg, centrifugal pumps and fans;
- Constant torque applications, eg, conveyors, centrifuges, displacement pumps, like compressors, and dosing pumps;
- Special applications, eg, punching machines with a need for constant speed with pulsating load, and packaging machines that must start and stop accurately.

The VLT 2800 series is among the smallest drives in the market. It is prepared for side-by-side mounting, and the space-saving design means reduced costs thanks to the reduced size of the panels in which the drives are installed.

The concept behind the product series is flexible modularity. Each drive consists of a basic device with

an optional module added on. While the basic part meets most demands to a drive within the power range, the add-on modules cover features that meet the exact requirements of the applications in question. The drive can be equipped with motor coils, 1B RFI filter, LC+1B filters depending on the added module, hence expanding the application area even further.

The compact design of the VLT2800 series does not mean that the new drives compromise on quality and functionality. Small as it is, the VLT 2800 has everything built-in, offering compliance with the 1A RFI standard and including a DC link choke as standard to secure a high power factor.

In addition to the compact, yet powerful design, the VLT® 2800 series is noted for a number of advanced features, especially aiming at the low power market. These include:-

- Flexibility: A predominant quality of the VLT® 2800 drive, not least thanks to the automatic motor tuning which measures the motor to ensure optimal match between drive and motor. Flexibility also springs from the DC bus access that enables loadsharing between all drives. This feature saves energy, provides kinetic back-up and ensures that all parts of the application stop simultaneously.

- Robust design: The VLT 2800 drive was developed for stable

operation in industrial environments. Consequently it comes with an RFI filter 1A built in, making the drive compliant with the EMC Directive EN 55011 1A requirements. In the 400 V device a built-in DC link choke contributes to the robust qualities, reducing the harmonic distortion and making external line reactors superfluous.

- User friendliness: The many benefits of the VLT 2800 series are easily accessible thanks to features like the Quick Menu, including all parameters basically needed for commissioning the drive and thus ensuring fast installation and service. The drives can also be operated from a hand-held control panel with full text display, offering the highest degree of user friendliness. Serial communication enabling control and monitoring from a PC adds to the impression of drives that are easy to handle.

Contact: J J Sampson & Son Ltd.  
Tel: 01 - 626 8111;  
eMail: sampson@indigo.ie

## TECHNICAL SALES REPRESENTATIVE

Due to continued expansion Finheat Ltd is looking for a **Technical Sales Representative** for its Cooling Department.

While experience of the **Air Conditioning market** is an advantage, it is not essential as full training will be given.

The position entails an attractive remuneration package and good career prospects.

Applications plus full CV to Valerie Smith



**FINHEAT LIMITED**

79 Cherry Orchard Industrial Estate, Ballyfermot, Dublin 10  
Tel: 01 - 623 4222; Fax: 01 - 623 4226

TRADE NEWS

### Alan Seery to 'Plumb Direct'

After many years with one of the building services industry's leading suppliers, Alan Seery has finally taken the plunge and set up his own venture. Called Plumb Direct, his partners are Kevin Shanahan and Tom Egan, both of whom are also very well known within the business.

Plumb Direct is operating from a 10,000 sq ft combined office/warehouse complex located at Unit C2/C3, Station Road Business Park, Clondalkin, Dublin 22. The trade counter is now fully operational while the showroom is set to open shortly.

Plumb Direct will cater for the entire building services spectrum, supplying quality, brand-leading products to the heating, plumbing and electrical supplies sectors.

BSNews will have further details in our next issue. Contact: Alan Seery/Kevin Shanahan, Plumb Direct. Tel: 01 - 457 9030.

### Look Up ... It's Grundfos!

As part of its ongoing programme of educational trips for contractors and consultants, Grundfos Ireland recently arranged for the Grundfos Corporate Jet to fly a party of eight guests to Denmark.



Owen McEntee, Tierneys with Niall Darcy, Project Management; Liam McDermott, Grundfos; John Murray, Varmings; and Connie O'Sullivan, EEL, Cork.

On arrival the group were taken to the Grundfos-owned guesthouse in Frisholt where they stayed the night before going to the company's headquarters in Bjerringbro where they spent the day visiting the production facilities, meeting personnel, etc.



Willie Allen, A&F with John Murray, Varmings; Alan Green, Project Management, Cork; Ralph O'Malley, Galway; John Lavelle, T Bourke; and Gordon Barry, Grundfos.

That night the party travelled on to Aarhus, the "second city" of Denmark, where they dined out and took in some of the city's high spots.

This series of trips continues over the coming months with the next party of invited guests scheduled to fly out in April.

*Make the contact today ...*



*Technical & Engineering Specialists*

Maro House, Belgard Road,  
Tallaght, Dublin 24  
Tel: (01) 452 0177 Fax: (01) 452 0515  
email: ciara@contact-recruitment.ie

## Air Heaters

The Mark GS gas-fired suspended air heater is an all-round product. Its wide industrial usage makes it one of the top products within the Mark range, its excellent price/performance ratio makes the Mark Gas air heater above all a European product. It is exported to more than fifteen countries. Available in suspended balanced flue room sealed or conventional flue type 18 to 98kW.



## Ecofan

Winter units which on the one hand ensure a temperature gradient which is as low as possible and on the other hand



are promptly able to extract, (summer/winter unit) should working conditions make this necessary

## Tanner

The Mark Tanner is an indirect water, steam or thermal oil fueled air heater. Its design and the use of first class components makes it a popular product with a big future. Many accessories complete the Tanner range such as fresh air or recirculation components as optional. Low pressure hot water unit air heaters from 8 to 126 kW.



## Calflo

The Mark Calflo make up air heater is a solution in all situations in which large quantities of (polluted) air are extracted, which is the case in spraying rooms, welding halls, machine factories and the plastics industry. The fully modulating burner makes an optimum balance of required heat and ventilation possible.



## Föhn

The Mark Föhn has been a unique product for years. Its fully dismantable construction means that the Mark Föhn can be installed in situations in which ready-assembled products cannot be installed. Combined with its superior performance, this makes the Föhn widely applicable. Thus the Föhn is often installed in commercial and industrial halls, government buildings and churches. Oil or gas-fired high output cabinet air heaters 50-400 kW.

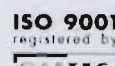


## Infra

As a black tube radiator, the Mark Infra 13-38 can be installed for space as well as local heating. It emits energy in the form of radiant heat which has the advantage of ensuring a pleasant, comfortable surrounding temperature. Suspended radiant tube heaters 13-38kW output. Conventional or balanced flue models.



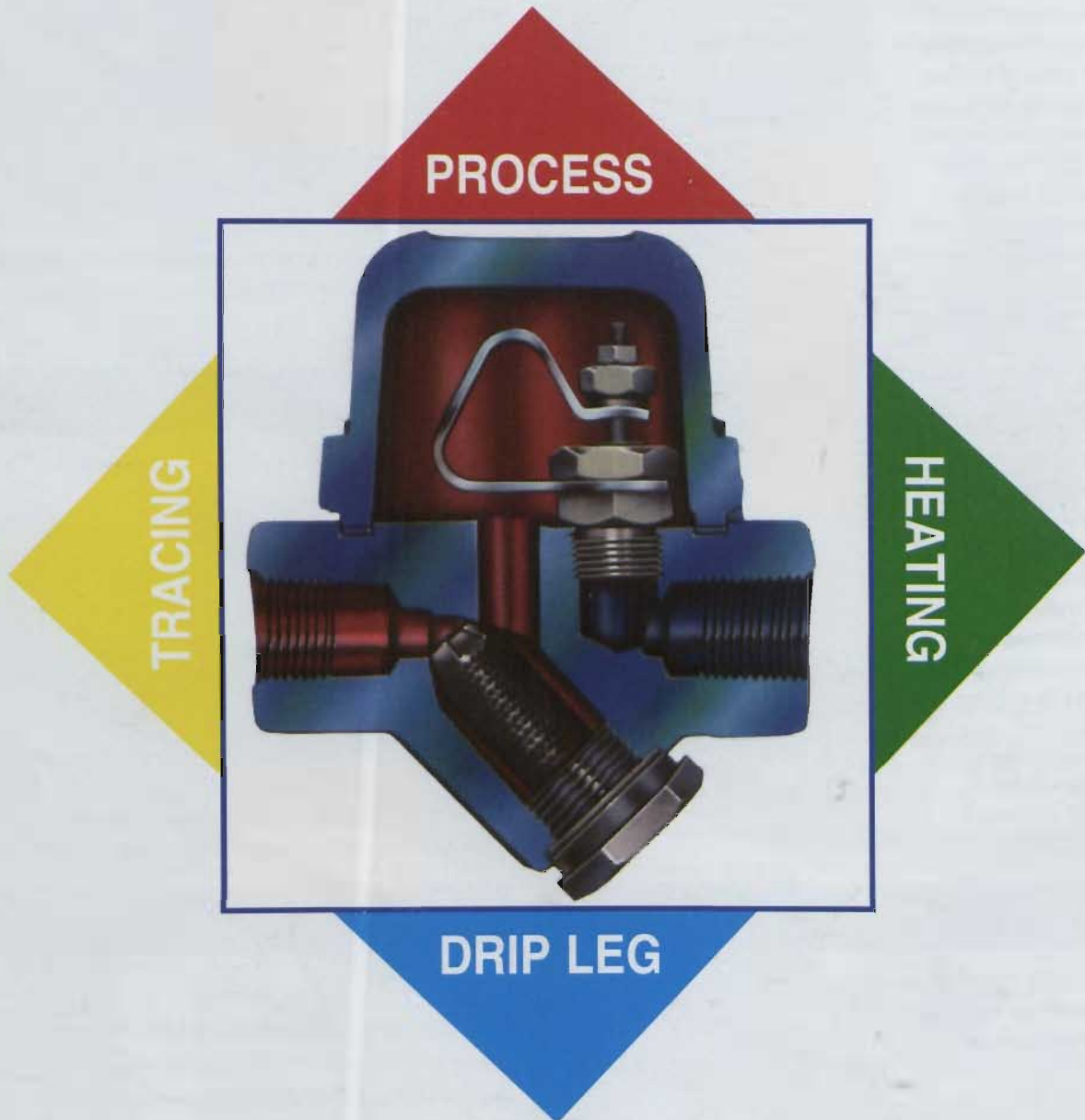
Mark Eire bv, Coolea, Macroom, Co Cork. Tel: 026 - 45334; Fax: 026 - 45383.  
Dublin: Tel: 01 - 668 0510; Fax: 01 - 668 0510.  
Mark bv, Beneden, Verlaat 87-89, 9645 BM, Veendam, Netherlands.  
Tel: +31 (0) 598 619600; Fax: +31 (0) 598 624584





# BESTOBELL STEAM

Steam Traps and Steam Specialties



## *Inside the Bestobell Steam Trap*



**MANOTHERM  
LIMITED**

THE CONTROL CENTRES

Manotherm Limited –  
The Control Centre,  
4 Walkinstown Road, Dublin 12.  
Tel: 01 - 452 2355;  
Fax: 01 - 451 6919