

2011

## Dynamic Electrical Ratings and the Economics of Capacity Factor for Wave Energy Converter Arrays

Fergus Sharkey

*Technological University Dublin, fergus.sharkey@gmail.com*

Elva Bannon

*Wavebob Ltd.*

Michael Conlon

*Technological University Dublin, michael.conlon@tudublin.ie*

*See next page for additional authors*

Follow this and additional works at: <https://arrow.tudublin.ie/engscheleart>



Part of the [Power and Energy Commons](#)

---

### Recommended Citation

F. Sharkey, E. Bannon, M. Conlon, K. Gauhgan. Dynamic Electrical Ratings and the Economics of Capacity Factor for Wave Energy Converter Arrays. European Wave and Tidal Energy Conference 2011.

This Conference Paper is brought to you for free and open access by the School of Electrical and Electronic Engineering at ARROW@TU Dublin. It has been accepted for inclusion in Conference papers by an authorized administrator of ARROW@TU Dublin. For more information, please contact [arrow.admin@tudublin.ie](mailto:arrow.admin@tudublin.ie), [aisling.coyne@tudublin.ie](mailto:aisling.coyne@tudublin.ie).



This work is licensed under a [Creative Commons Attribution-NonCommercial-Share Alike 4.0 License](#)

---

**Authors**

Fergus Sharkey, Elva Bannon, Michael Conlon, and Kevin Gaughan

# Dynamic Electrical Ratings and the Economics of Capacity Factor for Wave Energy Converter Arrays

Fergus Sharkey<sup>\*#1</sup>, Elva Bannon<sup>§2</sup>, Michael Conlon<sup>#3</sup>, Kevin Gaughan<sup>#4</sup>

<sup>#</sup> *Dublin Institute of Technology, Kevin Street, Dublin 8, Ireland*

<sup>\*</sup> *ESB International, Stephens Green, Dublin 2, Ireland*

<sup>1</sup>fergus.sharkey@esbi.ie

<sup>3</sup>michael.conlon@dit.ie, <sup>4</sup>kevin.gaughan@dit.ie

<sup>§</sup> *Wavebob Ltd, Maynooth, Co. Kildare*

<sup>2</sup>elva.bannon@wavebob.com

**Abstract**— Wave Energy Converters (WECs) have been in development for several decades with some devices now coming close to commercial realities. As such, pilot projects are being developed, particularly in the UK and Ireland, to deploy WECs on a pre-commercial array scale. The ultimate ambition is to have multiple WECs installed in a ‘wave farm’ in a similar fashion to offshore wind farms. For large scale wind farms the inter-array and export electrical systems can represent more than 20% of the project’s capital expenditure. Submarine power cables account for a large proportion of this cost. The same is expected to hold true for wave farms.

This paper investigates the possibility of underrating and dynamically rating the electrical inter-array and export cable systems for wave farms in order to assess the cost savings that can be made. This paper will also look at a simulated WEC array power output time series. The aim is to establish whether the electrical equipment, particularly submarine cables, will operate outside its design parameters if under-rated based on maximum continuous current. This paper also investigates the WEC capacity factor effect on the overall economics of the array electrical system.

It is concluded that cost savings could be made in the electrical network by utilising one, or a combination of, the outlined strategies.

**Keywords**— Wave Energy Converters, Electrical Network, Arrays, Submarine Cables, Dynamic Rating.

## I. INTRODUCTION

### A. Wave Farm Electrical Networks

The authors have extensively outlined the electrical network configuration of small, medium and large wave farms [1]. This is based on the state of the art in offshore wind farm configurations and the characteristics of the Wavebob WEC and WECs in general. The electrical networks in these cases were designed and rated for the peak generation of all WECs, i.e. 100% rated current, and also using the cable manufacturers’ current carrying capacity which are based on certain assumptions including ambient temperature, burial depth, and soil conditions, which are detailed in later sections.

The design methodology and assumptions used are the conventional means of designing and rating an electrical network. However there are several methods that may be employed which could improve the economics of the wave

farm electrical network without adversely affecting the performance.

If one envisages a wave farm with multiple WECs connected in an electrical network such as that shown in Fig. 1 one could assume that all of the WECs will not be generating 100% output all of the time. Therefore, if the system is rated for 100% output it is under-utilised for some of the time, i.e. the system has a low utilisation factor. This paper explores the economic effect of under-rating (in the conventional sense) some of the electrical network to increase utilisation. This can be done simply by looking at the statistical output of a WEC array, detailed design based on environmental data, or by employing more complicated real-time monitoring systems to optimise the usage of the electrical network.

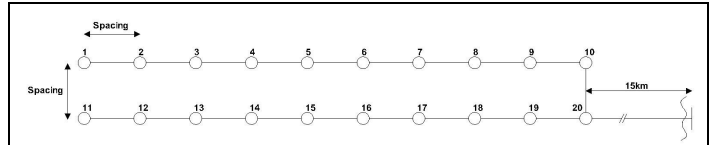


Fig. 1 – Electrical Network Layout of a Wave Farm

The initial electrical configurations in [1] also assumed a capacity factor of 30%. The effect of increasing the capacity factor on the electrical network economics is explored also.

The wave farm shown in Fig. 1 will be the candidate for analysis carried out in this paper. This was selected from [1] as it is a section of a ‘medium’ capacity wave farm. This wave farm is analysed for 20kV and 33kV voltage ratings. Fig. 1 shows the electrical layout only and is not representative of the physical spatial arrangement, which may differ.

### B. Submarine Cable Cost Model

In order to objectively compare the economics of the electrical networks and quantify potential cost reductions in the electrical network capital expenditure (capex) which may be achieved, reliable costs must be established for the submarine cables in the network. In the candidate wave farm (Fig. 1) no offshore substation is required so the large majority of electrical network costs are expected to come from the power cable system.

The cost of submarine power cables is extremely volatile in that there are numerous factors that can affect the overall cost

of the cable and its installation; namely materials cost (particularly copper and steel), mobilisation costs (significant for remote sites), seabed conditions (affecting installation method), downtime (determined by prevalent weather) and availability of equipment (determined by market demand). Therefore it is difficult to put a Euro price on cables that will remain relevant across all projects. Another approach is to look at the factors which make up the installed price of a cable and develop a unitised cost model which will be valid with all else being equal in the cost of cables and installation methods across a particular project. This method disregards contract strategies such as bulk purchasing or multi-project which are not possible to model.

By looking at the elements of each factor of the cable cost a unitised cost model can be established. The main factors affecting the cable cost are;

1. The voltage rating of the cable (i.e. the insulation rating/thickness)
2. The cross sectional area (CSA) of the conductor
3. The installation costs

For simplicity we will assume 3 core Cross Linked Polyethylene (XLPE) cables with copper conductors and a single layer of armouring for all cases as these are common cables in the offshore wind industry. It should be noted that dynamic cables (i.e. the riser cable from the seabed to the WEC) would typically be designed with two layers of armour for torque balance; however this is not considered here.

As this is a unitised cost model a base case is required. The base case will be a 10kV, 95mm<sup>2</sup> cable. This cable will have an installed unitised cost of 1.0 and all other cables will be represented as a multiple of this. The cost model was developed primarily using the formulae given by Lundberg in [2] and also verified by comparing against numerous sources such as [3]-[8]. The developed unitised costs are shown in Table I and also graphically in Fig. 2

For example a 33kV, 240mm<sup>2</sup> cable is 58% (1.58/1.0) more expensive than the base 10kV, 95mm<sup>2</sup> cable. Also a 20kV, 500mm<sup>2</sup> cable is 165% (2.25/0.85) more expensive than a 20kV, 50mm<sup>2</sup> cable.

TABLE I  
UNITISED SUBMARINE CABLE COSTS

Installed Cable Unitised Costs				
Cable CSA (mm <sup>2</sup> )	Voltage			
	10kV	20kV	33kV	132kV
35	0.79	0.82	0.85	-
50	0.81	0.85	0.88	-
70	0.85	0.89	0.94	-
95	1.00	1.05	1.11	-
120	1.05	1.11	1.18	-
150	1.10	1.17	1.25	-
185	1.25	1.34	1.43	-
240	1.35	1.46	1.58	-
300	1.65	1.80	1.97	-
400	1.80	1.99	2.21	2.79
500	2.00	2.25	2.53	3.25
630	2.25	2.55	2.89	3.75

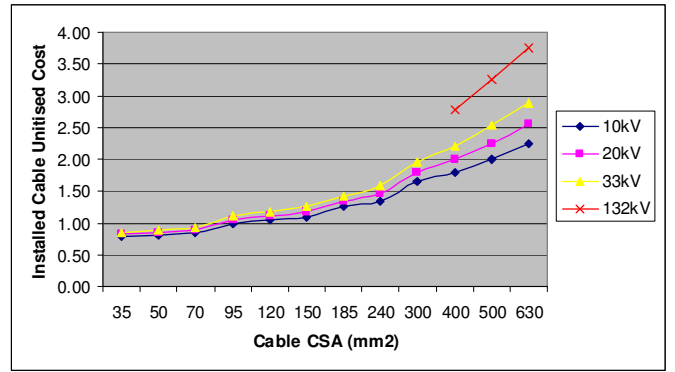


Fig. 2 - Installed Cable Unitised Costs

## II. MAXIMISING VALUE FROM WAVE FARM ELECTRICAL NETWORKS

The purpose of this paper is to explore strategies to reduce the capex of the electrical network of wave farms, i.e. to maximise the value of the electrical network asset with particular emphasis on the cabling system. This in turn will reduce the overall capex of wave farms and help to make the business case for these more attractive.

There are a number of strategies which are explored here in order to achieve this increase in the value from the wave farm electrical network. These will be analysed in detail in Section III but a brief description is given below.

### A. Increased Capacity Factor

The capacity factor of offshore wind turbines is typically in the region of 30-40% [9] depending on turbine type, location, yearly wind speed etc. So for example if a wind turbine has a rating of 1MW, then the average annual output for the turbine would be in the region of 300-400kW. If the same turbine had the same average annual output, but a capacity factor of 10%, then the turbine would have a peak rating of 3-4MW. This would obviously have an impact on the electrical network as the cables would need to be rated for the peak power. Larger, more expensive cables would be required even though the annual delivered energy (MWhrs) would not change. The opposite is also true in that a higher capacity factor would allow for smaller cables to be installed, thus reducing the electrical system costs.

The typical proportion of offshore wind farm capex spent on electrical infrastructure is 20-25% [10] so additional costs in this area could be significant to a project. Therefore, designing a device with a high capacity factor will lend to a more cost effective electrical network.

Low capacity factor also suggests, although does not guarantee, a highly variable power output. This may have effects on power quality and grid compliance but is not the topic of study here.

### B. Less Than 100% Rating Based on Statistical Data

As outlined above it could be assumed that an array of WECs would rarely reach 100% output. This leads to the supposition that the electrical export system could be rated at less than 100% of 'nameplate' rating. In this case the rating

will mean that the cable is under-rated when the WECs do reach maximum output simultaneously, leading to either output curtailment or a combination of one of the techniques described in Subsections C and D below. However any loss in energy may be offset by the savings gained from using a lower rated cable.

The UK National Grid & Crown Estate established the optimum economic case for electrical export systems for offshore wind farms in [11]. This concluded that the optimum wind farm capacity was 112% of the export cable capacity or, in other words, the optimum export cable capacity was 89.3% of the wind farm capacity. This was based on the optimum MWhr/£GB capex, taking into account availability and overall lifetime economics of the wind farm. The report acknowledged that curtailment of generation would be necessary at certain times.

By simulating a small array of WECs the effect that <100% rating of the cabling has on the proportion of time that the cable limits are exceeded can be evaluated. From this the effect on the annual energy yield of the array can be established and it can be seen whether this is offset by the savings in the capex of the electrical network.

### C. Dynamic Rating Based on Environmental Data

The current carrying capacity (ampacity) of power cables is calculated according to IEC60287 [12]. The maximum permissible continuous current is based on the maximum conductor operating temperature as defined by the cable manufacturer. For XLPE insulated cables this temperature is typically 90°C. The cable must dissipate heat during normal operation so the maximum permissible current is calculated based on the thermal properties of all of the components of the cable (insulation, screens, sheaths, filler, armour, and serving), the cable geometry and the thermal properties of the surroundings.

The current ratings given in submarine cable specifications such as [13] use assumed values for the ambient conditions and surroundings such as those given below;

- Ambient temperature of 20°C
- Sheaths bonded at both ends and earthed
- Burial depth of 1 metre
- Thermal resistivity of surroundings of 1 Km/W

The ambient temperature, burial depth and thermal resistivity of the surroundings are somewhat within the control of the designer. These vary over time and over the length of the cable route. Therefore the maximum permissible current will vary also.

### D. Dynamic Rating Based on Real-Time Measurement

Dynamic or Real Time Thermal Rating (RTTR) systems have been developed in order to utilise the ‘headroom’ available in transmission assets to increase the capacity at a given location. These systems monitor the environmental conditions (such as temperature, humidity etc.) and/or measure/model the temperature of the conductors themselves to allow dynamic constraints to be set on the system. This has

been shown to allow 10-30% increased capacity over the static thermal rating of overhead lines [14].

To date this has been utilised successfully, with varying levels of complexity, on transmission systems in a number of countries. It has also been utilised for offshore wind farm export cables [15].

These measurement technologies ensure that an accurate figure of the cable ampacity is maintained at all times thus allowing the cable asset to be utilised to its actual full permissible rating when required. Similar to the above methodology in Subsection C, this would give greater accuracy and confidence regarding the actual maximum current rating at any given time.

### E. Other Methods

Other methods which could potentially be employed include gas or liquid cooling, and burial methods (such as backfilling with low thermal resistivity aggregate) among others but these are considered outside the scope of this study as they are expected to be cost prohibitive.

Also of note is the study in [8] which looks at the ‘sharing’ of an export cable between an offshore wind farm and a wave farm. This is a novel idea and is shown to be advantageous in [8]. However it is not explored further here.

## III. DETAILED ANALYSIS AND RESULTS

Below is the detailed analysis performed for the four strategies (A-D) introduced in Section II. The method used is outlined in each section and the analysis is performed on the candidate wave farm, Fig. 1, with the exception of B which uses a 5 device array to reduce the complexity of the calculations.

### A. Increased Capacity Factor

In order to investigate the economic effect that capacity factor has on the electrical network a base case is established with a rating of 1MVA per WEC and 30% capacity factor giving 300kVA annual average per WEC. If we maintain this annual average and vary the capacity factor from 10-60% we get the parameters for the study as shown in Table II.

TABLE II  
PARAMETERS FOR CAPACITY FACTOR ANALYSIS

Capacity Factor	Device Rating
10%	3 MVA
20%	1.5MVA
<b>30% (base case)</b>	<b>1MVA</b>
40%	0.75MVA
50%	0.6 MVA
60%	0.5MVA

Naturally this means that the electrical system rating must be increased when the capacity factor falls and decreased when the capacity factor rises from the base case. For each of the capacity factors above the electrical system of the candidate wave farm (Fig. 1) is rated based on the maximum current. The overall cost of the electrical network is then calculated using the unitised submarine cost model introduced

in Section I. The resultant, relative costs are shown in Fig. 3 as multiples of the base case.

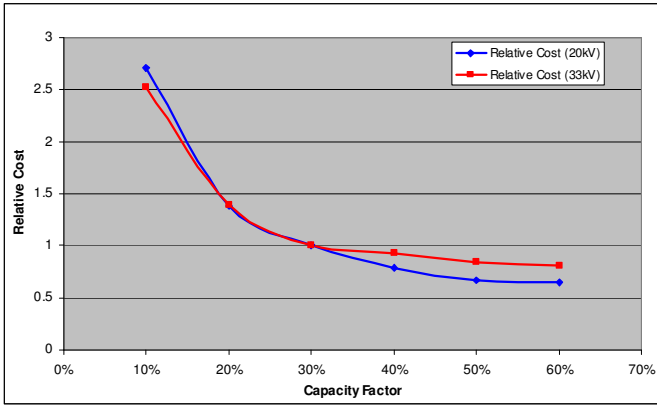


Fig. 3 – Relative Cost of Electrical Cabling versus WEC Capacity Factor

It can be seen that there is a significant cost penalty in reducing the capacity factor. Halving the capacity factor from 30% to 15% doubles the electrical network cost, but the benefits do not increase proportionally as the capacity factor is increased, i.e. doubling the capacity factor from 30% to 60% decreases the costs by 20-40%.

This also shows that decreasing the capacity factor from 30% to 20% increases the electrical network cost by approx 40%. Below a capacity factor of 20% the costs increase significantly.

Between 20% and 60% capacity factor there is approximately  $\pm 40\%$  variation in electrical system costs versus the base case of 30% capacity factor. There is a significant economic penalty from having a capacity factor of less than 20%.

We can conclude that there are savings to be made in the electrical network capex by increasing the capacity factor. We can also conclude that devices with capacity factors less than 20% will incur significant cost increases in the electrical network in comparison with devices with higher capacity factors, although this may be offset by some of the other strategies outlined here. From an electrical network perspective, device developers should aim to design for higher capacity factors.

### B. Less Than 100% Rating Based on Statistical Data

A small array of devices is examined to assess the possibility of lowering the rating of some of the cables thus realising cost savings. For simplicity a 5-WEC array is considered here. It should be noted that, unlike the candidate wave farm (Fig. 1), the physical spatial arrangement of the devices is considered here. All WECs are considered identical and interference between WECs, either destructive or constructive, is not taken into account. Interference is an area of significant interest to the wave energy industry; however it is not considered to be sufficiently developed to be included in this study.

Since interference is not considered, if all 5 WECs are in a row which runs parallel to the approaching wavefront they

would all react identically and simultaneously. If each individual WEC is generating 100% output then the WEC array is also generating 100% output.

A JONSWAP wave spectrum is used to generate a realistic wave elevation time series. This is fed into the Point Absorber WEC time domain model, derived from the time domain model in [16], which in turn gives a captured mechanical power time series for each WEC. In order to convert this captured mechanical power to an output electrical power the power-take-off (PTO) is simulated; first introducing a storage element by continuously averaging the captured mechanical power over half a wave period (i.e.  $T_p/2$ ) and then allowing an assumed (conservative) 70% conversion efficiency. The output is then saturated to a maximum of 1MVA per device. This model is shown graphically in Fig. 4. This is a much simplified, idealised model of the system which demonstrates the principle only.

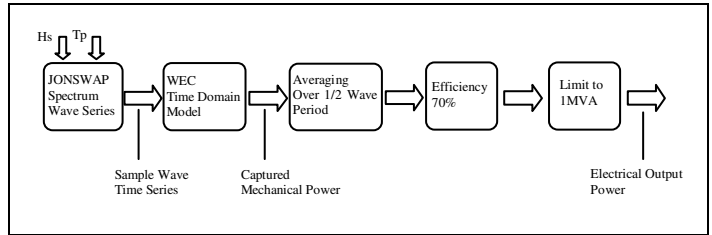


Fig. 4 – Representation of WEC and PTO Model for Analysis of Array Output

In order to avoid simultaneous operation the array layout is staggered so that some devices will be out of phase with others regardless of the angle of incidence. This means that the 5 WECs may not react simultaneously to the oncoming wavefront, although there may be a combination of wave period and approach angle that allows this to occur. This array is shown in Fig. 5

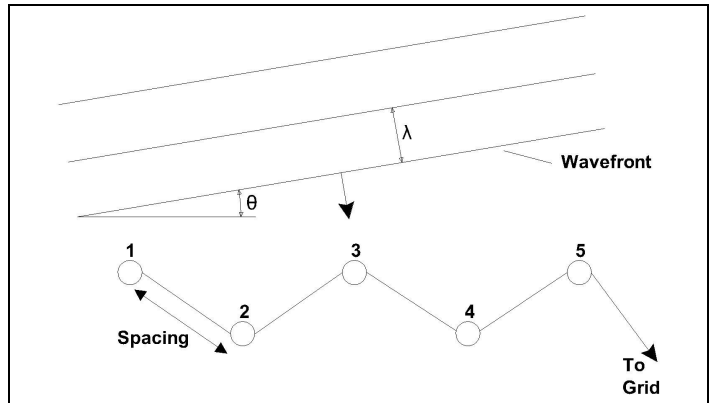


Fig. 5 - Concept of Array for Analysis ( $\theta$  = angle of incidence,  $\lambda$  = wavelength)

The base case is established by sizing the cables in the array based on nameplate (100%) output current. This assumes each WEC having a 1MVA rating. The electrical network will be at 10kV in this case as a higher voltage would

not be necessary due to this array capacity. The cable cross sectional areas (CSA) required are shown below in Table III.

TABLE III  
CABLE CSA BASED ON MAXIMUM CONTINUOUS CURRENT

Cable Link	Required Capacity	Rated Capacity	CSA
1-2 (400m)	1MVA	2.9MVA	35mm <sup>2</sup>
2-3 (400m)	2MVA	2.9MVA	35mm <sup>2</sup>
3-4 (400m)	3MVA	3.4MVA	50mm <sup>2</sup>
4-5 (400m)	4MVA	4.15MVA	70mm <sup>2</sup>
5-Grid (10km)	5MVA	5MVA	95mm <sup>2</sup>

It should be noted that this configuration gives large active power losses at 100% output, which would be unacceptable, however losses are ignored here as they do not dictate the cable CSA selection in larger arrays at higher voltage.

Focussing on the export cable only (5-Grid), reducing the cable CSA from 95mm<sup>2</sup> to 70mm<sup>2</sup> would reduce the export capacity from 5MVA to 4.15MVA or 83% of the rated array output. From the unitised cost model in Section I this will give a saving of 15% for the export cable. The time series output from the five devices is assessed to see if or when the overall output exceeds 4.15MVA. This will allow a cost benefit analysis to be carried out to see if the potential savings outweigh the possible loss of annual energy from the array.

A model of the array was built in MatLab® which incorporates the power conversion shown in Fig. 4 for each WEC. The angle of incidence of the approaching wavefront can be varied to give the total output of the five devices for any sea state and any angle of incidence. This model is shown graphically in Fig. 5. Spacing is 400m between WECs. The combined output of all of the devices in the array gives the output power across the export cable (5-Grid). As mentioned previously losses are not considered here.

If the angle of incidence is 0° the wavefront is parallel to the line dissecting WECs 1, 3 & 5. Therefore, the wavefront will meet these three WECs simultaneously and also WECs 2 & 4 simultaneously though out of phase with WECs 1, 3 & 5. This would be considered the worst case scenario, and this was confirmed by analysing the output of the array between 0° and 90° angle of incidence. In all cases the worst case output, i.e. the output with the highest array peak power was given at 0°.

The proportion of time that the array generates maximum output (5MVA), and the proportion of time the array generated more than 83% output (>4.15MVA) were evaluated for all sea-states (i.e. all combinations of H<sub>s</sub> and T<sub>p</sub> in the scatter diagram). These proportions were multiplied by the percentage occurrence of these cells from the Belmullet (West Mayo, Ireland) scatter diagram, as shown in Fig. 6, to give the annual proportion for each value. The percentage of energy generated during the period where the array output was greater than 4.15MW was also calculated. These values were taken at 0° angle of incidence. Results are shown in Table IV.

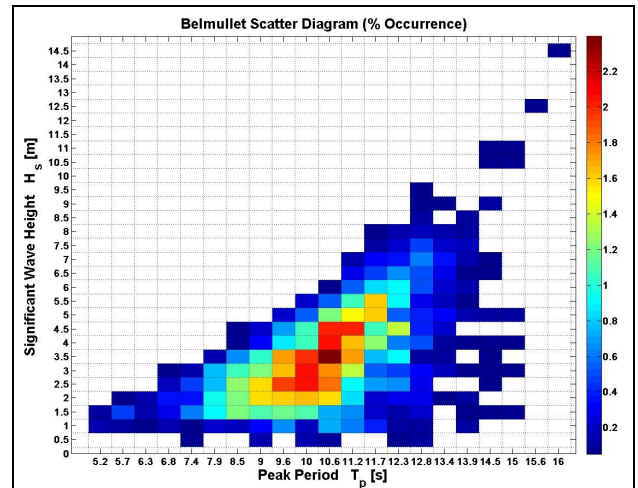


Fig. 6 – Belmullet Scatter Diagram [17]

TABLE IV  
ANNUAL OUTPUT OCCURRENCE AND ANNUAL ENERGY OUTPUT PROPORTION FOR ANALYSED DATA

	100% Output (5MVA)	>83% Output (>4.15MVA)
Total Annual Output (Time)	3.20%	6.20%
Total Annual Energy (MWhrs)	N/A	2.98%

It can be seen that in the course of a year the output power of the full array is 100% (5MVA) for 3.2% of the time and greater than 83% (>4.15MVA) for 6.2% of the time.

However the energy supplied in the time that the array output is >83% (>4.15MVA) is only 2.98% of the total annual energy output. This means that if the cable was 70mm<sup>2</sup> instead of the 95mm<sup>2</sup> less than 3% of the overall energy (MWhrs) would need to be curtailed, i.e. would be lost.

To analyse the financial implications of this we would need to know the exact costs of the cable, the revenue expected and also the cost of capital. For the purpose of demonstration it is assumed that a 95mm<sup>2</sup> cable costs €350/m installed and that the revenue for energy is €200/MWhr. Also a 10% cost of capital is assumed. The ‘discounted years to break even’ is defined as the time taken for the saving in capex made from the cable CSA reduction to be offset by the lost revenue including the ‘time value of money’. Table V shows the relevant calculated results.

TABLE V  
HYPOTHETICAL ‘BREAK-EVEN’ CALCULATION

Annual energy (with 30% capacity factor):	13,140MWhrs
Annual revenue no curtailment	€2.628m
Annual revenue with curtailment of 2.98%:	€2.550m
Lost revenue per annum with curtailment	€78,314.40
Capex for 10km of 95mm <sup>2</sup> cable	€3.5m
Capex for 10km of 70mm <sup>2</sup> cable (-15%)	€2.975m
Savings from CSA reduction	€525k
Discounted years to break even	~10 years

This hypothetical situation above shows that the initial savings in capex gained from utilising a smaller cable will be offset within 10 years by the lost revenue. Over a typical 25 year project this would not make financial sense. This assumes 100% availability, high revenue which may fall over time, and neglects active power losses so in fact revenue will be lower.

It should be noted that the figures established above are based on 0° angle of incidence, which is the worst case scenario and uses idealised wave conditions. In reality any given site will have a prevailing wave direction, and also a wide range of angles for the incoming wave. To reduce the likelihood of devices reacting simultaneously to an oncoming wave, the wave farm could be orientated away from the prevailing wave direction. Therefore, the percentage annual energy >4.15MVA could be lowered.

Other techniques such as detuning individual WECs to change their response characteristic and further staggering of the array to increase the phase shifting between devices could also allow for further reductions in potential energy curtailment. As an example the row of WECs 1, 3 & 5 were taken out of phase by putting a constant time delay of 2 seconds between WECs 1 & 3 and 4 seconds between WECs 1 & 5. In this case the energy curtailed for a 70mm<sup>2</sup> cable drops from 2.98% to 1.96%. This leads to a 28 year 'discounted years to break even' in the hypothetical case shown above. Therefore, by staggering the array further the amount of energy to be curtailed can be reduced and the economics will become more favourable.

Using simplified models and a number of assumptions this strategy for cable system cost reduction shows promise. With more reliable array modelling including interference, detailed cost benefit analysis based on expected revenues, availability data, confirmed cable costs and calculated cable losses a business case could be made to employ this methodology to the wave farm electrical system.

Also note that the ampacity ratings are taken from IEC 60287, which is based on 100% load factor. Additional short term ampacity would be available in the cable by employing methods from IEC 60853, which looks at cyclic loading and emergency current ratings [18]. This may allow the cable to be utilised above its ampacity rating for short periods, thus reducing potential curtailment further still.

This strategy could also be combined with one of the strategies below which may reduce the amount of potential curtailment to a negligible level.

### C. Dynamic Rating Based on Environmental Data

As mentioned previously the ampacity of a cable is a function of its ability to dissipate heat. This is based on a number of factors some of which will vary both over time and across the length of the cable as it passes from one zone to another. These factors are based on environmental data such as seawater and air temperature and route conditions such as burial depth and seabed/soil conditions. These conditions can be accurately established from historical data and site measurements, allowing the setting of seasonal ratings and the calculation of accurate ampacity.

By focussing on our candidate wave farm (Fig. 1) and in particular the export cables which are 400mm<sup>2</sup> for 20kV and 150mm<sup>2</sup> for 33kV, we can evaluate the effect of lowering the cable CSA. Table VI shows the ampacity of these cables (and the next CSA down) at the assumed values (see Section II Subsection C).

TABLE VI  
AMPACITY OF RATED AND NEXT SIZE DOWN CABLES FOR WAVE FARM

Voltage	Required Ampacity	Cable CSA	Ampacity (assumed values)
20kV	567 A	400mm <sup>2</sup>	627A
		300mm <sup>2</sup> (next CSA down)	564 A
33kV	347 A	150mm <sup>2</sup>	368 A
		120mm <sup>2</sup> (next CSA down)	330 A

Focussing on the west coast of Ireland, Fig. 7 shows that the seawater temperature varies seasonally from approx 6-15°C. Also the air temperature for the land based portion of the cable is important and this is shown in Fig. 8 and varies seasonally from approx 3-17°C although with some extremes. This implies that the cable ampacity will vary throughout the year due to ambient temperatures.

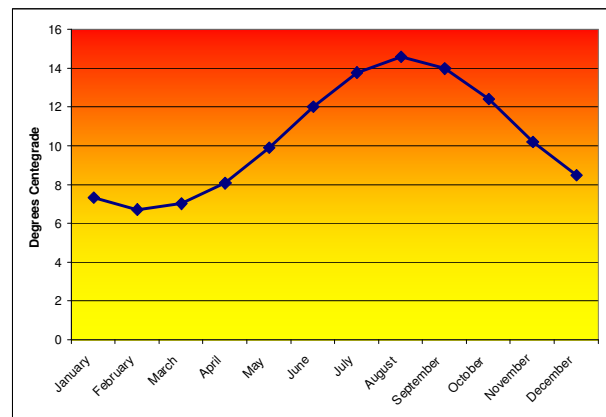


Fig. 7 – Average Monthly Seawater Temperature at Malin Head 1961-1990 (source: Met Eireann)

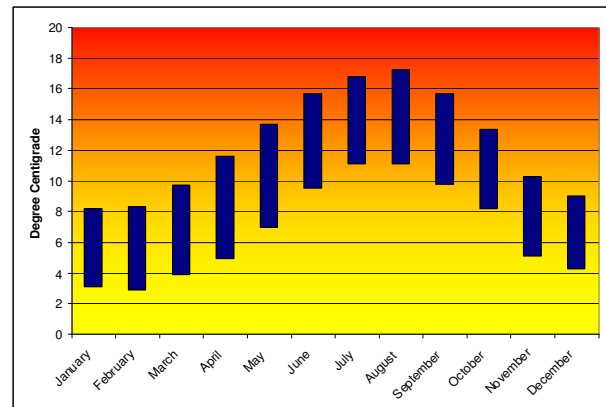


Fig. 8 – Average Monthly Air Temperature Range at Belmullet 1961-1990 (source: Met Eireann)



It is assumed for this analysis that the worst thermal resistivity along the route is 1.0 Km/W and that the burial depth is 1.0 m along the entire cable route. From this information we can show the available and required ampacity across the year for the selected cable and the next lowest size cable. The air temperature is used for the calculation as it has higher extremes than the seawater temperature and the land section of the submarine cable would be expected to be a “bottleneck” as a result.

Fig. 9 shows the results of the seasonal adjustment for a 20kV system. Based on the adjustment of the seasonal temperatures alone we can show that a 300mm<sup>2</sup> cable is more suitable for this application. The output of the array almost reaches the ampacity limit in the summer months; however this is only when the output of the array is 100%. Thus by understanding the environmental data the cable size has decreased from that using the assumed values.

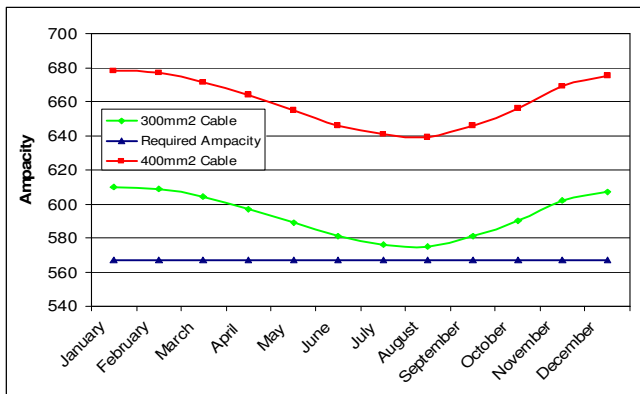


Fig. 9 - Seasonal Ampacity of 20kV Cables

Fig. 10 shows the results of the seasonal adjustment for a 33kV system. Based on the adjustment of the seasonal temperatures alone we can show that a 120mm<sup>2</sup> cable is not suitable for this application. The output of the array exceeds the ampacity limit of the 120mm<sup>2</sup> cable from May through October; however this is only when the output of the array is greater than 95%. Thus from this analysis a 150mm<sup>2</sup> cable is more suitable. However, one of the other methods, such as that in Subsection B above may be applied to allow the use of a 120mm<sup>2</sup> cable.

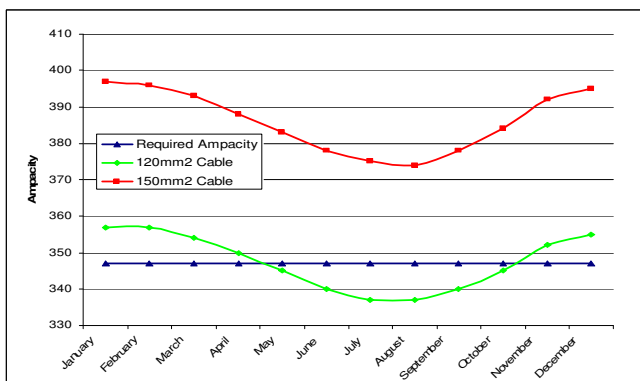


Fig. 10 - Seasonal Ampacity of 33kV Cables

For the 20kV array the reduction in cost of the export cable by reducing the cable from 400mm<sup>2</sup> to 300mm<sup>2</sup> would be approx 10%. For the 33kV array the cost savings from reducing the export cable from 150mm<sup>2</sup> to 120mm<sup>2</sup> would be approx 6%. These saving only consider the export cables. Further savings to the overall electrical system costs could be made by reducing the inter-array cables CSA, particularly those nearest the export side, using the same method.

#### D. Dynamic Rating Based on Real Time Measurement

The methodology in Subsection C above carries a certain amount of risk as there may be times when the air temperature is significantly higher than the average for a given month. Therefore the system is normally designed for extremes to introduce a factor of safety.

In order to remove this risk real time measurement may be utilised to ensure that the ampacity of the cable is calculated in real time and the cable is never at risk of becoming overloaded. This can be done by simply measuring the ambient temperatures at several locations along the route and using a model of the cable to calculate ampacity. However this does not give actual real-time data about the conductor temperature and simply gives a calculated ampacity at a given time. More complex distributed temperature sensing (DTS) systems which measure the actual temperature of the conductor across the entire cable route will allow a very high degree of certainty in the loading at a given time.

DTS systems can use fibre optic technology which through a combination of back scattered light intensity and time domain reflectometry can measure the temperature to one metre resolutions in cables up to 30km in length [15][19]. This can give a temperature profile of the entire length of the cable thus allowing accurate loading of the cable, i.e. accurate dynamic ampacity ratings, and identification of hotspots along the route. While the DTS fibre optic cable can be installed after cable manufacture, it is preferable to install the sensing cable during manufacture as this will improve response time and makes the system integral to the power cable.

Such a real time system would allow the operator to use the strategies given in this paper with full confidence that the power cable asset will be maintained within safe limits. It also means that any output curtailment will be kept to an absolute minimum. Naturally such a system will increase the costs of the installation but this would be expected to be a marginal increase.

## IV. CONCLUSIONS

The costs of the electrical network for wave farms is expected to follow that of offshore wind farms with 20-25% of capex required for the offshore and onshore electrical infrastructure [20]. A large portion of this expenditure will be on the power cabling network. If savings can be made in this area a more solid business case can be made for commercial wave farms.

If wave energy converters with a capacity factor of approx 30% are installed in an array, the utilisation factor of the electrical network and in particular the export cable would

also be 30%. A number of strategies are proposed to increase the utilisation of the power cables for a wave farm which will ultimately mean a reduction in cost for the electrical network.

Increasing the capacity factor of the individual WECs will increase the utilisation factor and thus reduce the cost of the electrical network. Savings of up to 40% of the cost of the cable network could be expected. Conversely, if the WECs have a capacity factor of less than 20%, the costs could be expected to rise significantly. The design of the WEC device itself will dictate the capacity factor, but device developers should note the economic penalties of a low capacity factor device within an array.

Modelling and simulation of an array of WECs can assist in providing statistical data of the wave farm power output. This permits the assessment of the utilisation of the electrical infrastructure and reduction in export cable capacity by 10-20% to allow reduction in costs of the electrical network. This may require some curtailment of the array output power but should be a very small percentage of annual energy from the wave farm. Strategic spacing of the WECs within the array may be required to achieve this effect but could be further optimised to reduce energy curtailment. This strategy coupled with other methods described here could potentially lead to no loss of energy whatsoever within the array while giving a saving in capex.

The use of detailed environmental data from the site location could allow the ampacity of a cable to be modelled annually. This would allow the maximum utilisation of the cable at all times of the year and curtailment at times when the cable design limits may be exceeded. Through this a reduction in export cable capacity by 10-20% may also be achieved thus also reducing costs.

Real time distributed temperature sensing (DTS) will provide a constantly updating profile of temperature across the entire length of the cable. This will allow accurate and reliable dynamic ampacity of the cable to be calculated thus allowing the full utilisation of the cable at all times. It will also serve to identify hotspots along the cable route and protect the cable over the long term.

These strategies have been shown to allow for cost reductions and increased utilisation of the power cables. The choice of strategy will depend on the overall economics of the project and the information available to the designer while specifying the electrical system. It should be noted that the strategies listed above, although demonstrated on power cables, would also have applications in other power system components in the wave farm electrical network such as power transformers, power converters and switchgear.

## ACKNOWLEDGMENT

The authors would like to acknowledge the contribution of the Wavebob team in providing models for use within this report. The authors would also like to acknowledge the members of the ESB International Ocean Energy department for their support of this work.

## REFERENCES

- [1] F. Sharkey, M. Conlon & K. Gaughan. "Investigation of Wave Farm Electrical Network Configurations". *World Renewable Energy Congress*, Linköping, 2011.
- [2] S. Lundberg. "Performance Comparison of Wind Park Configurations." Chalmers University – Technical Report. 2003
- [3] J. Green, A. Bowen, L. Fingersh & Y. Wan. "Electrical Collection and Transmission Systems for Offshore Wind Power". *2007 Offshore Technology Conference*
- [4] M. Kenny. "Electrical Connection Issues for Wave Energy Arrays." University College Cork, Masters Thesis. 2010
- [5] P. Djapic & G. Strbac. "Cost Benefit Methodology for Optimal Design of Offshore Transmission Systems". SEDG Report. 2008
- [6] Department of Trade and Industry (DTI). "Study of the Costs of Offshore Wind Generation". 2007
- [7] P. Hopewell, F. Castro-Sayas & D. Bailey. "Optimising the Design of Offshore Wind Farm Collection Networks". Universities Power Engineering Conference. 2007
- [8] E. Stoutenburg & M Jacobson. "Optimizing Offshore Transmission Links for Marine Renewable Energy Farms". *OCEANS 2010*.
- [9] N. Boccard. "Capacity Factor of Wind Power Realized Values versus Estimates". *Energy Policy* vol. 37 - 2009. pp. 2679-2688.
- [10] R. Green, N. Vasilakos. "The Economics of Offshore Wind". *Energy Policy*, vol. 39 - 2010. pp. 496-502
- [11] The Crown Estate (National Grid) – "Round 3 Offshore Wind Farm Connection Study"
- [12] IEC 60287. "Electrical Cables – Calculation of the Current Rating"
- [13] Nexans Ltd. "Submarine Power Cables. Specifications."
- [14] T Seppa. "Increasing Transmission Capacity by Real Time Monitoring" *IEE Power Engineering Society Meeting*. 2002 Volume 2, pp. 1209-1211.
- [15] J. Downes & H. Leung. "Distributed temperature sensing worldwide power circuit monitoring applications". *International Conference on Power System Technology*. 2004
- [16] J. Candido, P. Justino. "Frequency, Stochastic and Time Domain Models for an Articulated Wave Power Device" *International Conference on Offshore Mechanics and Arctic Engineering*. 2008
- [17] D. Mollison. "Ireland's Wave Power Resource – A Report to the National Board for Science and Technology and Electricity Supply Board" 1982
- [18] IEC 60853. "Calculation of the Cyclic and Emergency Current Ratings of Cables."
- [19] M. Luton, G. Anders, J Braun, N. Fujimoto, S Rizzetto & J. Downes. "Real Time Monitoring of Power Cables by Fibre Optic Technologies Tests, Applications and Outlook." *International Conference on Insulated Power Cables*. 2003
- [20] RenewableUK – "Challenging the Energy- A Way Forward for the UK Wave & Tidal Industry Towards 2020." October 2010.