

2023-6

University Education Model: Overview

Fionnuala Darby

Technological University Dublin, fionnuala.darby@tudublin.ie

Shaun Ferns

Technological University Dublin, shaun.ferns@tudublin.ie

Barry J. Ryan

Technological University Dublin, barry.ryan@tudublin.ie

Follow this and additional works at: <https://arrow.tudublin.ie/totalarcprep>

 Part of the [Scholarship of Teaching and Learning Commons](#)

Recommended Citation

Darby, Fionnuala; Ferns, Shaun; and Ryan, Barry J., "University Education Model: Overview" (2023). *Group Reports*. 32.

<https://arrow.tudublin.ie/totalarcprep/32>

This Technical Report is brought to you for free and open access by the Reports at ARROW@TU Dublin. It has been accepted for inclusion in Group Reports by an authorized administrator of ARROW@TU Dublin. For more information, please contact arrow.admin@tudublin.ie, aisling.coyne@tudublin.ie, vera.kilshaw@tudublin.ie.



This work is licensed under a [Creative Commons Attribution-NonCommercial-Share Alike 4.0 International License](#).

University Education Model

Our university way of being

“A supported landscape of choices and experiences through which learners attending TU Dublin can learn and grow, offering them the skills, knowledge, experience and qualifications they require”

The University Education Model (UEM) revolutionises our approach to education; this approach is grounded in transformative learning opportunities and experiences for all. The [University Education Model](#) is central to the TU Dublin Strategic Intent, which itself is informed by the UN Sustainable Development Goals (SDGs), and in the case of the University Education Model, SDG 4 Quality Education. Embedding the University Education Model into our practice, processes and culture will empower TU Dublin to cater for the largest number of diverse learners, producing the most sought after, digitally literate, graduates. The central focus of University Education Model are our **learners**, and they ground the three components that comprise the University Education Model: **Learner Support**, **Learner Choice**, and **Learner Experience**. Synergistically combining these three components encourages our learners to embrace opportunities for growth, as well as personal and societal development, over their learning journey at TU Dublin. The UEM supports learners to realise their unique potential as individuals and in relationships with others, thereby contributing positively to the well-being and productivity of society, the planet, and its inhabitants. This creates a sustainable, yet progressive, TU Dublin where we all belong, and the experience of all learners, including staff, is meaningful, enriching, and life-enhancing.

Learner Centered

The education model is a learner-centred approach that values the needs, interests, and autonomy of our learner as core to transformative learning.

Learner Support

Make education accessible, inclusive and attainable for as diverse and broad a range of learners as possible.

Learner Choice

Enable learners to pursue their interests, passions, and life purpose by offering choice and enabling student agency.

Learner Experience

Empower learners to discover who they are and grow as whole people through transformational educational experiences that are interdisciplinary, sustainable, digital, inclusive and authentic.

University Education Model

- [10 Guiding Principles](#)
(approved by AC, June 2020)
- [UEM Charter](#)
(approved by AC, Dec. 2021)

Implementing the Model

- [7UET Fundamentals](#)
(approved by AC, June 2022)
- [Resource Allocation Model Principles](#)
(approved by AC, Sept. 2022)

Evidence & Support

- [UEM Socialisation Report](#)
(May 2022)
- [‘UEM GP Essentials’ Series](#)
(2021 - 2024)
- [Actioning the UET Brief and Synopsis](#) (Oct. 2022 & Sept. 2023)



“A supported landscape of choices and experiences through which learners attending TU Dublin can learn and grow, offering them the skills, knowledge, experience and qualifications they require”

University Education Model

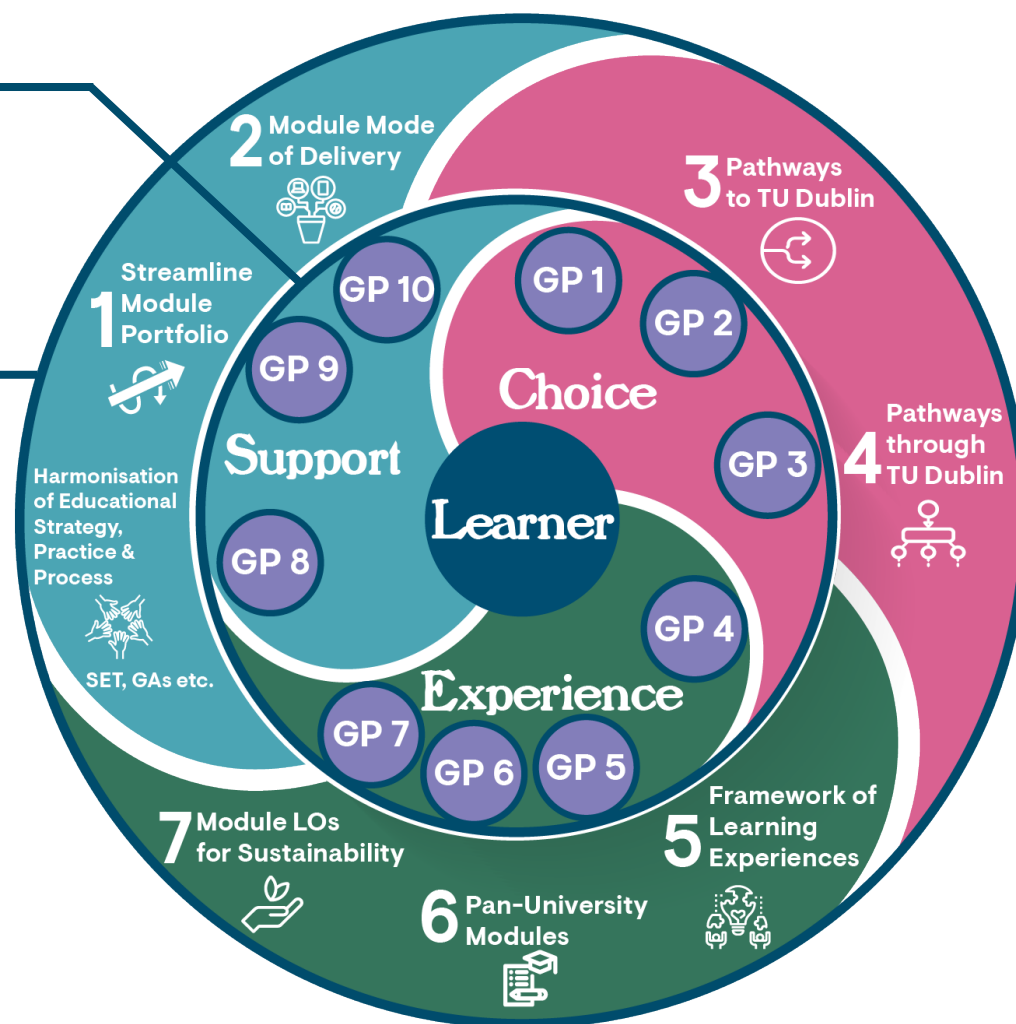
- [10 Guiding Principles](#) (approved by AC, June 2020)
- [UEM Charter](#) (approved by AC, Dec. 2021)

Implementing the Model

- [7UET Fundamentals](#) (approved by AC, June 2022)
- [Resource Allocation Model Principles](#) (approved by AC, Sept. 2022)

Evidence & Support

- [UEM Socialisation Report](#) (May 2022)
- [‘UEM GP Essentials’ Series](#) (2021 - 2024)
- [Actioning the UET Brief and Synopsis](#) (Oct. 2022 & Sept. 2023)



University Education Model