
Russell Hotel

Places

1954-07-01

An Inventory and Valuation of the Furniture, Fittings and Fixtures Contained in the Hotel Russell, St. Stephens Green Dublin: Second Floor

Harry Lisney & Son

Follow this and additional works at: <https://arrow.tudublin.ie/rushot>

Recommended Citation

Harry Lisney & Son, "An Inventory and Valuation of the Furniture, Fittings and Fixtures Contained in the Hotel Russell, St. Stephens Green Dublin: Second Floor" (1954). *Russell Hotel*. 3.
<https://arrow.tudublin.ie/rushot/3>

This Other is brought to you for free and open access by the Places at ARROW@TU Dublin. It has been accepted for inclusion in Russell Hotel by an authorized administrator of ARROW@TU Dublin. For more information, please contact arrow.admin@tudublin.ie, aisling.coyne@tudublin.ie, vera.kilshaw@tudublin.ie.

HOTEL RUSSELL

FLOOR LAYOUT

REFERENCE NUMBERS SHOWN

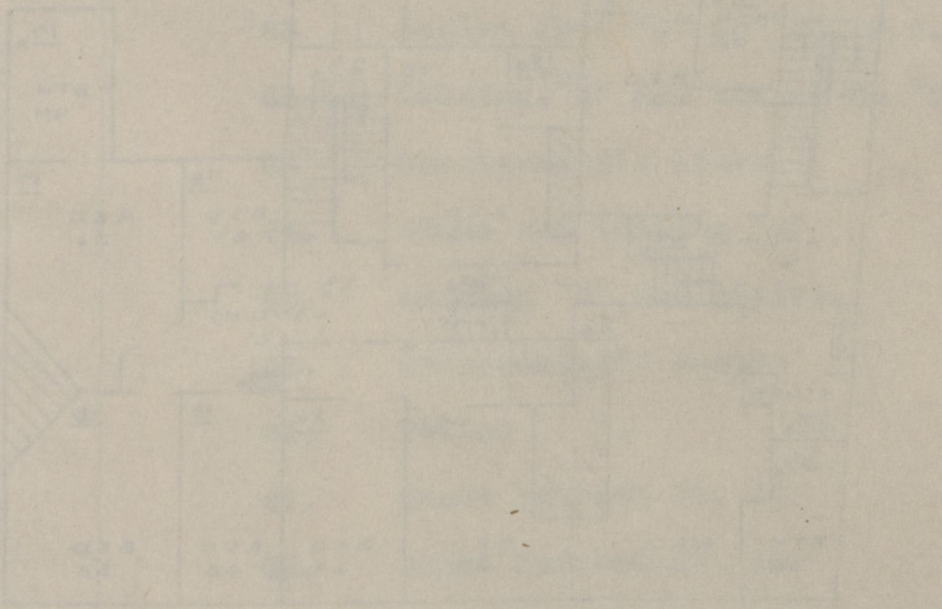
ARROWS ON STAIRS POINT DOWNWARDS

Page 101

H O T E L R U S S E L L

S E C O N D F L O O R P L A N

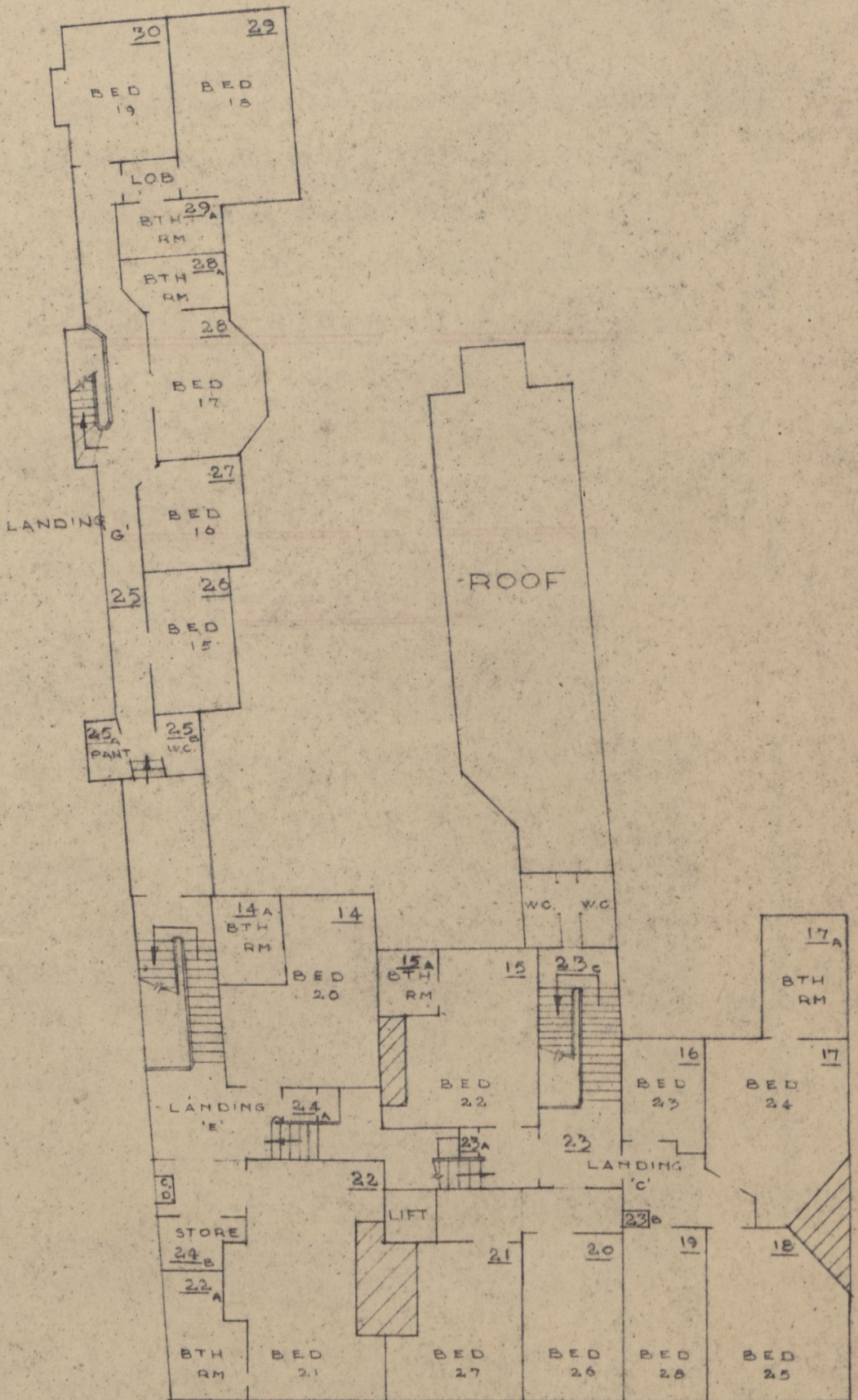
O V E R L E A F



HOTEL RUSSELL

FLOOR LAYOUT

REFERENCE NUMBERS SHOWN
ARROWS ON STAIRS POINT DOWNWARDS



SECOND FLOOR PLAN

H O T E L R U S S E L L

VALUATION SUMMARY

SECOND FLOOR

Page ref:		£
52	Guest Bedroom No. 20 .	325.
52	Guest Bathroom adjoining No. 20	200.
53	Guest Bedroom No. 22 .	375.
53	Guest Bathroom adjoining No. 22	180.
54	Guest Bedroom No. 23 .	315.
55	Guest Bedroom No. 24 .	350.
55	Guest Bathroom adjoining No. 24	215.
56	Guest Bedroom No. 25 450	450.
57	Guest Bedroom No. 28 .	310.
58	Guest Bedroom No. 26 .	400.
59	Guest Bedroom No. 27 .	315.
60.	Guest Bedroom No. 21 .	515.
61	Guest Bathroom adjoining No. 21	235.
62	Landing "C". Cupboard .	415.
62	Housemaid's Pantry .	50.
62-63	Cupboards on landing .	360.
63	Stairs from "C" to "D". 2 W.C.'s	175.
63-64	Landing "E" and stairs to "F" .	530.
64	Chambermaid's store .	170.
64.	Store off landing "E" .	180.
65.	Landing "G" and stairs. .	390.
65.	Chambermaid's Pantry .	90.
66.	Toilet .	70.
67.	Guest Bedroom No. 15 .	425.
68.	Guest Bedroom No. 16 .	430.
69.	Guest Bedroom No. 17 .	410.
70.	Guest Bathroom adjoining No. 17	225.
71.	Guest Bedroom No. 18 .	635.
72.	Guest Bathroom adjoining No. 18	225.
73.	Guest Bedroom No. 19 .	600.

Total: £9,570.