
Russell Hotel

Places

1954-07-01

An Inventory and Valuation of the Furniture, Fittings and Fixtures Contained in the Hotel Russell, St. Stephens Green Dublin: Index and Ground Floor

Harry Lisney & Son

Follow this and additional works at: <https://arrow.tudublin.ie/rushot>

Recommended Citation

Harry Lisney & Son, "An Inventory and Valuation of the Furniture, Fittings and Fixtures Contained in the Hotel Russell, St. Stephens Green Dublin: Index and Ground Floor" (1954). *Russell Hotel*. 5.
<https://arrow.tudublin.ie/rushot/5>

This Other is brought to you for free and open access by the Places at ARROW@TU Dublin. It has been accepted for inclusion in Russell Hotel by an authorized administrator of ARROW@TU Dublin. For more information, please contact arrow.admin@tudublin.ie, aisling.coyne@tudublin.ie, vera.kilshaw@tudublin.ie.

AN
INVENTORY & VALUATION
OF THE
FURNITURE FITTINGS & FIXTURES
CONTAINED IN THE
HOTEL RUSSELL
ST. STEPHEN'S GREEN,
DUBLIN

PREPARED BY
HARRY LISNEY & SON
M.A. F.R.I.C.S., M.I.A.A., CHARTERED SURVEYORS
23 ST. STEPHEN'S GREEN,
DUBLIN
ON
1st JULY, 1954

AN
INVENTORY & VALUATION
OF THE
FURNITURE FITTINGS & FIXTURES

CONTAINED IN THE

Page:

		2
	Index and Plan	3
	Particulars	4-26
	<u>H O T E L R U S S E L L</u>	27
	Index and Plan	28
	Particulars	30-49
	Valuation summary by rooms	50
	<u>ST. STEPHEN'S GREEN</u>	51
	Valuation summary by rooms	52-73
	<u>DUBLIN</u>	74
	Index and Plan	75
	Particulars	76-99
	Valuation summary by rooms	100
	Index and Plan	91
	Particulars	92-102
	Valuation summary by rooms	103

PREPARED BY

HARRY LIGNY & SON

M.A., F.R.I.C.S., M.I.A.A., CHARTERED SURVEYORS

23 ST. STEPHEN'S GREEN

DUBLIN

ON

1st JULY 1954

H O T E L R U S S E L L

GENERAL INDEX

		Page:
LIST OF ABBREVIATIONS USED		2
GROUND FLOOR	Index and Plan	3
	Contents	4-26
	Valuation summary by rooms	27
FIRST FLOOR	Index and Plan	28
	Contents	29-49
	Valuation summary by rooms	50
SECOND FLOOR	Index and Plan	51
	Contents	52-73
	Valuation summary by rooms	74
THIRD FLOOR	Index and Plan	75
	Contents	76-89
	Valuation summary by rooms	90
BASEMENT	Index and Plan	91
	Contents	92-102
	Valuation summary by rooms	103

HOTEL RUSSELLLIST OF ABBREVIATIONS USED.

Bath, complete	Means with chromium self-mixing tap unit, plug and chain, inset china soap holder.
W.H.B., complete	Two chromium taps, waste, plug and chain
Square occasional table	Glass top and lace mat, 2' wide on square tapering legs.
Circular bedroom table	Circular wood table with square sloping legs complete with plate glass top and circular lace mat.
Mahogany occasional table. Type "A"	3' x 1'8" on turned sloping legs.
Bathroom Table	Painted cane circular table with sloping legs 17" diameter with plate glass top.
Complete with Bedclothes	1 interior sprung mattress, 1 single under blanket, 2 sheets, 2 white blankets, 1 yellow blanket, 1 pillow, 1 feather pillow, 1 eiderdown in net cover.
Bedroom chair. Type "A"	Comprising mahogany staved back with square legs and removable Rexine cover, padded seat and loose material cover.
Bedroom chair. Type "B"	Mahogany framed chair with turned front legs, divided staved back, sprung seat and loose cover.
Bedroom chair. Type "C"	Mahogany chair with turned front legs and shaped padded back
Bedroom chair. Type "D"	Modern chair with shaped legs and back with 3 bars and sprung seat.
Diningroom Chair. Type "A"	Oak-framed padded seat with woven thonged back.
Diningroom Chair. Type "B"	Oak-framed with padded leather seat and woven thonged back
Drawingroom Chair. Type "A"	Mahogany shaped seat and padded back.
Easy Chair - Bedroom	Upholstered fireside chair with shaped semi-detached back and Dunlopillo seat on tapering shaped legs.
Bidet, complete	Means with 2 taps and waste, lever and plug.
Modern Bedside cabinet	Stained wood with plate glass top and linen runner.
Extension telephone, complete	Instrument complete with flex, telephone directory

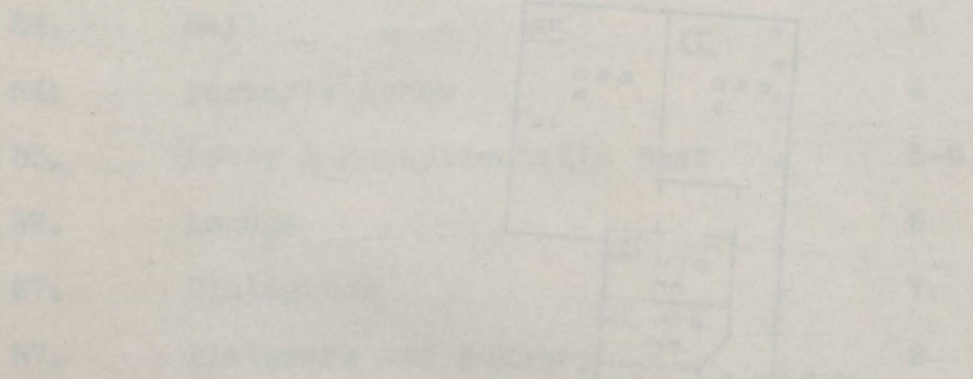
HOTEL RUSSELL

FLOOR

PLAN

REFERENCE NUMBERS SHOWN
ARROWS ON STAIRS POINT DOWNWARD

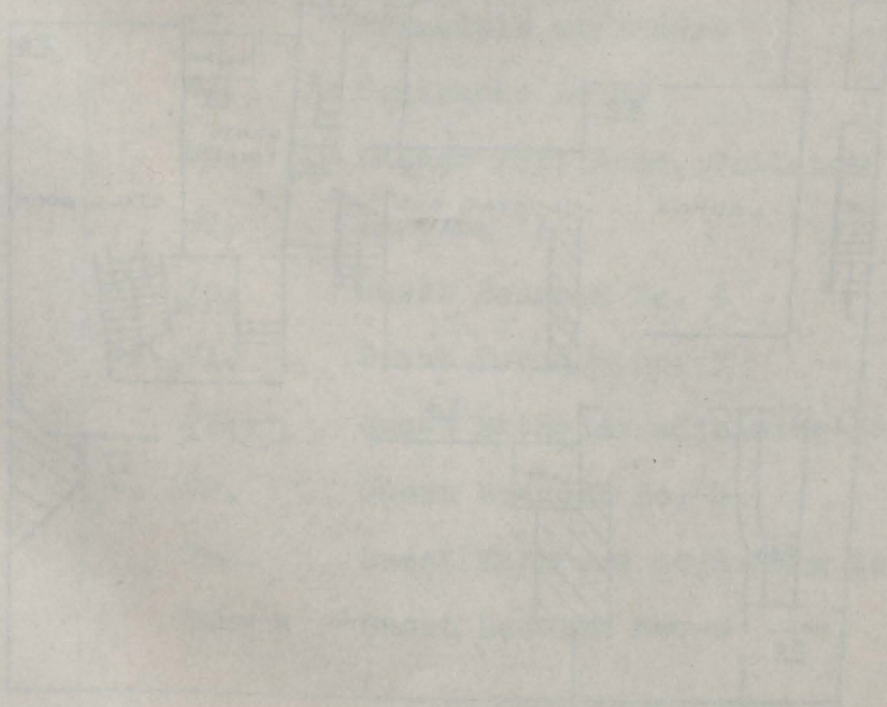
1927



H O T E L R U S S E L L

G R O U N D F L O O R P L A N

O V E R L E A F



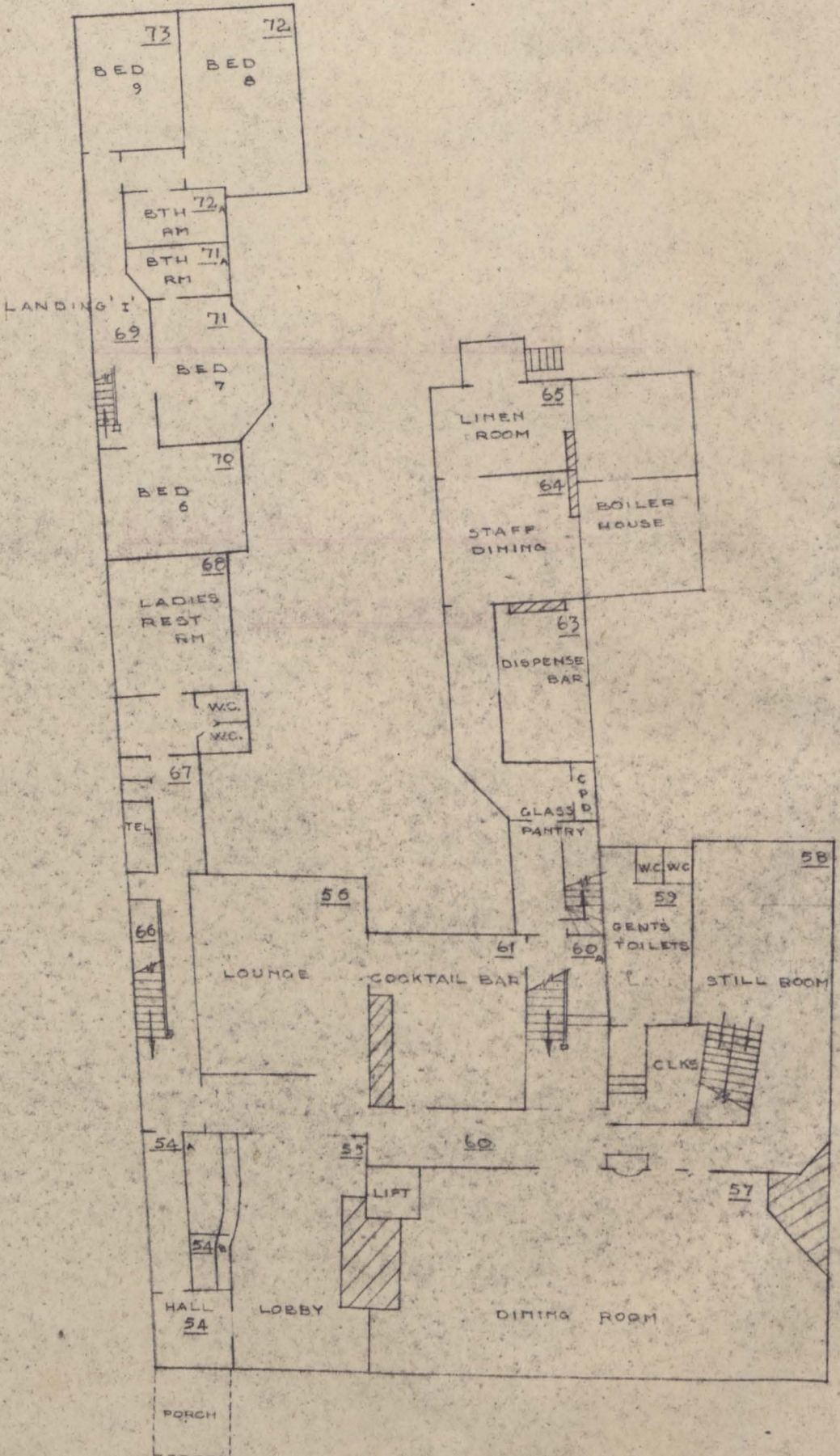
G R O U N D F L O O R P L A N

1927

HOTEL RUSSELL

FLOOR LAYOUT

REFERENCE NUMBERS SHOWN 1
ARROWS ON STAIRS POINT DOWNWARDS



GROUND FLOOR PLAN

HARRY LISNEY &
CHARTERED SURV
23 ST STEPHEN
DUBLIN

H O T E L R U S S E L L

GROUND FLOOR INDEX

Plan ref:		Page:
54.	Hall	4
54A	Porter's Lobby	4
55.	Lobby & Receptionist's Desk	5-6
56.	Lounge	6
57.	Diningroom	7
57.	Plateware and cutlery	8
58.	Still and crockery	9-10
59.	Gentlemen's Toilet	10
60.	Diningroom passage	11
60A	Passage to Glass Pantry	11
61.	Cocktail Bar	11-12
62.	Glass Pantry and Glassware	13
63.	Dispense Bar	14
64.	Staff Diningroom	14
65.	Linen room and contents	15-17
66.	Principle staircase	18
67.	Telephone Lobby	18
68.	Ladies Rest Room, Toilets	19
69.	Landing "I"	20
70.	Guest Bedroom No. 6	21
71.	Guest Bedroom No. 7	22
72A.	Guest Bathroom adjoining No. 7.	23
72.	Guest Bedroom No. 8	24
72A.	Guest Bathroom adjoining No. 8.	25
73.	Guest Bedroom No. 9	26

HALL

PORTER'S LOBBY

(Plan reference No 54)

12
1

- Rubber matting 7½' x 12'
- 1 Core mat 5' x 3'
- 2 Notices "Push"
- 2 Notices "Pull"
- 1 Porter's desk 3' long incorporating 2 cupboards and 2 drawers
- 1 Diningroom chair with leather seat and tonged back
- 1 Telephone extension, complete

- Paneling at rear and side incorporating letter box
- 1 Large circular concealed light fitting in ceiling
- 2 External swining doors 3'3" wide each with 4 small springs, 1 "Pull" notice, 4 solid brass hand rails
- 1 Core mat 3' wide
- Rubber matting on floor with Russell monogram 9' x 4'
- 1 Licence lable over door
- 3 Russell name-plates worked in metal, one incorporating neon sign
- 6 Electric reflectors fixed in area on metal brackets for lighting front of building
- 6 Flag staffs on top of building 12' high with wire supports
- 7 Window boxes

£:300 - -

PORTER'S LOBBY

(Plan reference No 54A)

1
1
1
1
1
1
1
1
1
1
2
1

- Doors at front and rear each with three glass panels and brass lever handles, Briton door closer
- 1 Strip light complete with Bakelite frame
- 1 pr House steps
- 1 Mop
- 1 Large Hoover
- 1 Ebank carpet sweeper
- 1 Twig brush
- 1 Set firearms
- 1 "Erin" Fire Extinguisher
- 2 Spare uniforms
- 1 Map of Dublin

PORTER'S LOFT OVER

1
3
1 pr
1
4
1

- 1 Expanding metal ladder on frame
- 3 Sets golf clubs and bags
- 1 pr Skis
- 1 Rubber mat
- 4 Spare coir mats
- 1 Metal milk crate

OVER/

PORTER'S LOFT - Continued

- 12 Porter's and page's uniforms
- 1 Portion office desk incorporating letter and drawers, misc. stationary
- 4 Electric radiators
- 12 Wicker hamper
- 1 Bucket
- 2 Wastepaper baskets
- 9 Misc. suitcases
- Other miscellaneous items

VALUE: £:350: - : -

LOBBY

(Plan reference No 55)

- 1 Fitted Wilton strip carpet 32' x 18' with felt under (160' x 2'3")
- 1 Coin mat inset in well 6' x 3'6" with brass surround on three sides
- 2 prs Lined fawn curtains 11'6" long on railway runners with pelmet
- 2 prs Draped nylon curtains with frilled edge on brass rods
- 2 Venetian blinds
- 2 Standing brass ashtrays
- 2 Metal wall brackets with tassel design each supporting 3 electric candles with shades, complete
- 1 Central glass chandelier supporting 5 electric candles with shades, complete
- 1 Wall mirror in carved wood gilt frame 3' x 2'
- 1 Antique brass fire kerb, rail design
- 1 Fire ashtray with shaped brass front
- 1 Fireplace with brass surround and marble mantelpiece supported on 2 pillars incorporating carved plaque
- 1 Small flower vase
- 1 Flower basket
- 1 Low occasional table 2' diameter with a wererite top
- 2 Glass ashtrays
- 1 Water colour by Raymond McGrath
- 1 Shaped wall seat on front windows, total 16' with detachable back, 9 loose cushions, Height 2'6"
- 3 Plate glass wall protectors 9' x 1'
- 2 Fireside chairs to match wall seat with sprung seats
- 1 Circular occasional table 2'6" high, 2' diameter on tapering legs

RECEPTIONIST'S DESK

- 1 Fitted brown Wilton carpet, 4'6" x 12' with felt under (24' x 2'3")
- 1 Shaped desk 11' long x 2' wide incorporating swinging door with reeded wood front and plate glass top, 2 cupboards, 1 large and 1 small drawer, 2 shelves
- Panel at rere fitted to allow for 48 keys and 25 letter racks
- 1 Desk at side 4' long with sloping top, 1 small drawer, 3 large drawers at side,
- 1 Cupboard over with 2 small drawers and handles

OVER/

RECEPTIONIST'S DESK - Continued

- 1 Small alcove fitted with strip light
- 1 Small glass side screen
- 3 Circular ceiling lights over
- 1 Extension telephone, complete
- 1 High stool with sprung seat and low back
- 1 Mahogany dining room chair with sprung seat
- 1 Mahogany occasional table. Type A
- 2 Framed notices
- 2 Six-drawer wooden card indexes
- 1 Blotting pad with ink well and pen
- 1 Wire waste-paper basket
- 4 Cash boxes
- 3 Dozen misc. files
- 1 Royal portable typewriter
- Door to main staircase: Double door with plate glass panels, brass finger and kicking plates, 4 notices, 2 hooks and 2 bar handles, 2 Britons door closers.
- Door to Lift: Heavy door with circular glass panel incorporating brass bar at front and lever at back.
- 1 Mahogany lined "Waygood Otis" lift for seven persons with expanding doors, carpet on floor, glass light ceiling fittings, serving all floors.
- 1 Glass screen to hallway 10' including 2 glass panels with sanded design
- 2 Swinging doors with central panels
- 2 Yale automatic door closers with solid brass hand bars on each side

VALUE: £:3,000 - :

LOUNGE

(Plan reference No 56)

- 1 Fitted green Wilton strip carpet, 19' x 16' (140' x 2'3") with felt under
- 1 Patterned hearth rug, 7' long
- 2 prs Heavy material curtains to match hall on railway runners with wooden pelmets
- 2 prs Net curtains on brass rods, full-length
- 4 Metal wall lights with tassel design each with 3 electric candles and shades,
- 4 Upholstered fireside chairs, sprung seat
- 6 Mahogany dining room chairs. Type A
- 5 Low occasional tables with wererite top
- 1 Wooden glass screen dividing hall, with three glass panels on metal supports
- 1 Shaped seating against wall with sprung seat and back with loose head cover, total 32' long
- 1 Concave wall mirror in gilt wood frame with eagle design
- 2 Brass standing ashtrays
- 1 Antique brass kerb, rail design
- 1 Marble fireplace with inset central panel
- 1 Ashpan with shaped brass front
- 5 Guinness ashtrays
- 1 China vase
- 1 Large ornamental pink and green jug
- 4 Bell pushes

VALUE: £:700: - :-

DININGROOM

(Plan reference No 57)

- 1 Wilton strip carpet, patterned on red background 44' x 22' (475' x 2'3")
With felt under
- 2 Rubber mats, 5' x 3' and 8' x 3'
- 5 prs Heavy-lined brocade curtains 13' high on railway runners with full-length wooden pelmet
- 5 prs Full-length nylon curtains with frilled edges on wire springs
- 5 Venetian blinds, 4'6" wide
- 32 Drawing room chairs. Type A
Fitted wall seats with padded backs and sprung seats, material covered, mahogany shelf at back, 60' long.
- 2 Circular tables 2'6" with pedestal base
- 4 Circular tables 2'6" wide with 4 tapering legs
- 3 Circular expanding tables 2'9" wide
- 5 Oblong tables with central bar 4' long
- 4 Square tables with taperings legs, 2'3"
- 2 Shaped serving tables 2' long
- 1 Serving trolley 3'3" long with tubular metal frame on castors and wooden trays
- 15 Expanding leaves
- 21 Table felts
- 2 Electric air extractors fitted in window.
- 8 Hanging lights enclosed in frilled material, complete
- 4 Ceiling lights enclosed in portholes with frilled shades
- 1 Mural on wall 4'6" high and full-length 45', lighted at base with continuous strip light
End wall panelled with square mirror, total number 16 - 2'6" square with four additional strips 9"
Opposite panels with 8 squares - 2'6" square and 4 additional 9" strips
- 4 Mirrors enclosing pillar 5' x 1' each
Plywood panelling on wall 40' long to a height of 8'3"
- 1 Cashier's desk with shaped front and counter with drawers under, approached by small separated door and complete with telephone extension and strip lighting, carved oak hall seat, rexene padded back
Door Furniutre: Handle and brass bolt
- 1 Serving unit incorporating copper well for flower pots, 3 shelves at rere, shaped at front with 2 curved fitted dumb waiters, each 4' long with wererite top
- 1 Oblong fitted dumb waiter with wererite top.
- 1 Wicker knife basket
- 2 China fish ornaments on rock base
- 2 Glass tanks 1' x 1'3"
- 7 Miscellaneous ferns in pots
Door Furniture on main door: 2 Monarch door closers, 2 prs metal handles
Furniture on service doors: 2 automatic Briton door closers, 4 kicking plates

PLATEWARE AND CUTLERY

Set in Restaurant - Made by Elkington Ltd. :-

6	Oval dishes 16" diam. & covers to fit
10	Oval dishes 14" diam. & covers to fit
10	Oval dishes 12" diam.
1	Oval dish 36" x 15"
10	Oval dishes 10" diam.
8	Round dishes 14" diam. & 6 covers to fit
9	Round dishes 10" diam. & 9 covers to fit
19	Round dishes 8" diam. & 15 covers to fit
9	Vegetable dishes 9" diam. with 10 x covers
14	Vegetable dishes 7½" diam. with 18 covers
28	Vegetable dishes 6" diam. with 29 covers
37	Knives, 9" long
42	Cheese knives
3	Fruit knives
74	Fish knives, 7½" long
164	Meat forks 8" long
75	Small forks, 7" long
68	Fish forks 7" long
3	Fruit forks
19	Oyster forks
7	Lobster picks
87	Soup spoons 7" long
46	Serving spoons 8½" long
76	Dessert spoons 7" long
4	Soup ladles 12" long
30	Salt cellars 3" high
29	Pepper cannisters 3" high
21	Mustard pots 2" diam. with 10 spoons
3	Souffle dishes 8" diam. (in two parts)
2	Souffle dishes 6" diam. "
2½	Souffle dishes 5" diam. "
1	Ham stand
2	Large soup tureens
2	Small soup tureens
29	Soup plates 6" diam. and 15 covers
15	Large silver trays 18" diameter
3	Small silver trays 14" diameter
11	Wine coolers, 5 stands 18" high
27	Sauce boats 5" and 8"
25	Ice dishes
9	Large teapots 4½" high
18	Smaller teapots 3½" high
12	Coffee pots 5½" high
2	Water jugs 5½" high
10	Milk jugs 3" high
7	Forks escarvet
11	Pincers escarvet
13	Plates escarvet (1 large)
2	Ice Trays
4	Pie dishes 11" diameter
4	Oval meat dishes 14" diameter
8	Double vegetable dishes 10" x 7"
3	Toast trays
5	Wine trays
2	Lamps (spirit)
10	Finger-bowls 4½" diameter
8	Toast racks 4" long
2	Crepe suzette pans
3	Suger cannisters 8" high

VALUE: £1,050: - : -

STILL ROOM

(Plan reference No 58)

- Door from diningroom passage with Yale doorcloser with wererite external finish, 1 circular glass panel, Large copper finger plates and bar handle
- 1 Small notice board 18" square
- 1 Cane messenger's basket
- 1 Store cupboard 3'3" wide with 3 shelves
- 1 Silver plates ham stand on marble base
- 8 Cane knife baskets
- 3 Shelves 9' long with chromium edge
- 1 Plated meat trolley with water hot-plate and burner under
- 1 Cupboard unit, 5' long with 2 shelves over and cupboards, 2'3" wide
- 1 Steam hot-plate with 3 sliding doors 7' long, part fitted with wooden cover
- 1 Service counter 13' long complete with higher shelf 6' long and flap
- 1 Seat-operated Jackson coffee machine with milk and coffee compartments
- 1 Stott hot-water geyser
- 1 Gas-operated griller 1'9" long
- 12 China coffee percolaters in different sizes
- 1 Gas-operated toaster 2'9"
- 1 Small steel sink, complete
- 1 Wide cupboard unit at rere, 8'6" long
- 1 Bread slicer
- 1 Bucket
- 1 Aluminium saucepan
- 2 Aluminium trays
- 1 Enamel water jug
- 1 Counter unit 5' long with additional flap and shelves at rere.
- 1 Tray
- 1 Hard brush
- 1 Stainless steel worktop 7' long
- 1 Stainless steel worktop 4'6" long
- 1 Electrically operated dish-washing machine enclosed, 2'3" long complete with motor and pump
- 8 Metal racks
- 1 Large dustbin
- 2 Buckets
- 1 Small oval zinc bath
- 1 Stainless steel sink, 5' long
- 1 Milk churn 2'3" high (10 gallons)
- 1 Chair
- 1 Draining board 3'6" long
- 1 Silver-plated ham press, complete
- 1 Silver-plated tray 2'6" long
- 3 Copper frying pans
- 1 Shelf unit 15' long with 4 shelves
- 1 Kitchen table 7' long
- 1 Two-bar flourescent light fitting, 4' long
- 1 Two-bar flourescent light fitting with reflector
- 2 Small electric fan extractors
- 1 Large electric fan extractors

OVER/

STILL ROOM - Continued

CHINA IN STILL ROOM

(Plan reference No. 56)

- 51 Side plates, 7" diameter
- 123 Side plates, 6 1/2" diameter
- 142 Sweet plates, 9" diameter
- 169 Dinner plates 10" diameter
- 108 Soup plates 9 1/2" diameter
- 91 Saucers 6" diameter
- 18 Small milk jugs 3" high
- 4 Small milk jugs
- 19 Breakfast cups 3" diameter
- 42 Saucers 5 1/2" diameter
- 37 Ashtrays
- 69 Saucers 4 1/2" diameter
- 30 Teac ups, 2 1/2" diameter
- 16 Sugar basins
- 17 Circular butter dishes
- 32 Consomme cups 4" diameter
- 43 Coffee cups 4" diameter
- 2 Sugar basins
- 11 Circular cut glass a dishes
- 11 Pyrex dishes 3" diameter

VALUE: \$1,050.00

Door to toilet:

- 1 Mahogany hand rail
- 1 Coin mat 3' x 2'
- 1 circular glass panel
- 1 spring closer

VALUE: \$1,050.00

- 1 Painted occasional table 2' wide
- 1 Ashtray
- 1 Hair brush
- 1 Table cloth
- 1 Towel
- 2 Roller towels
- 2 Chrome towel rails on brackets 1'3" long
- 2 Chrome single a coat hooks
- 2 Wash hand basins on brackets, 23" wide
- 1 Wall mirror 7'6" x 10"
- 1 Toilets each with:
 - 1 Puritan low combination unit
 - 1 Joyce toilet paper holder
 - 1 Circular light fitting
 - 1 Bar, handle and "Engaged" bolt
 - 1 door electric light switch
 - 1 single clothes hook
 - 1 larger circular light fitting

VALUE: \$1,100.00

STILL ROOM - Continued

- 1 Miscellaneous cleaning equipment
- 1 Wooden folding ladder, 10'
- 1 Mop
- 1 "Erin" Fire Extinguisher on wall brackets
- 1 Circular electric light fitting, complete
- 3 Shaped connecting leaves
- 2 Circular expanding tables 4' wide
- 2 Circular tables 3'
- 1 Square table 2'6"
- 4 Collapsible tables 4' long
- 6 Collapsible tables 6' long
- 6 Felts for table

VALUE: £:1,060: - :

GENTLEMEN'S TOILET

(Plan reference No 59)

- 1 Lino in lobby 10' x 7'
- 1 Coat rack with 9 double coat hooks
- 1 Coat rack with 12 double coat hooks and hat rack over
- 1 Coat rack with 6 double coat hooks
- 1 Glass light fitting, complete
- Stairs to toilet: 1 circular glass light fitting
- 1 Mahogany hand rail
- 1 Coin mat 3' x 2'
- Door to toilet: 1 circular glass panel
- 1 spring closer

- 1 Painted occasional table 2' wide
- 4 Ashtrays
- 1 Hair brush
- 1 Table cloth
- 1 Towel
- 2 Roller towels
- 2 Chromium towel rails on brackets 1'8" long
- 3 Chromium single coat hooks
- 3 Wash hand basins on brackets, 23" wide
- 1 Wall mirror 7'6" x 18"
- 3 Toilets each with:
 - 1 Puritans low combination unit
 - 1 Jeyes toilet paper holder
 - 1 Circular light fitting
 - 1 Bar, handle and "Engaged" bolt
 - 1 door electric light switch
 - 1 single clothes hook
 - 1 larger circular light fitting

VALUE: £:230: - : -

11.

DININGROOM PASSAGE

(Plan reference No 60)

- 1 Wilton fitted strip carpet with felt under dark green, 21' x 8'6"
- 1 Double fluorescent strip light on ceiling with full-length reflector 1'6" wide throwing light on ceiling
- 1 Mahogany table supporting glass fish tank 5'3" x 3'
- 1 Fish tank 2' x 2' x 4' with wooden cover on top, contents including fish and aerating pump, complete
- 1 Lead lined trough on top with additional flap, 2' long
- 1 Chromium-plated serving trolley with 2 trays, 3' long on castors
- 1 Serving table 6' long complete with rere stand
- 1 Wall mirror 6' x 2'
- 1 Small table
- 5 Trolley tops
- 1 Small tablecloth
- 1 Banqueting cloth with felt under
- 1 Head waiter's desk with shelf and 3 drawers, 3'6" high
- 2 Coir mats 3'6" x 2'
- 1 Rubber mat 9' x 3'
- Lino on floor with felt under 4' x 9'

VALUE: £:260: - : -

PASSAGE TO GLASS PANTRY

(Plan reference No 60A)

- Lino on floor 20' x 4'
- 2 Electric light points with coloured glass light shades, complete
- 1 Brush

VALUE: £:15: - : -

COCKTAIL BAR

(Plan reference No 61)

- 1 Plain fitted green Wilton strip carpet, 13' x 15' (100' x 2'3"), felt under
- 1 Stripped rubber mat 9' x 3'
- 1 Fitted sprung leather-covered seating, 25'
- Service shelving round walls, black Vitralite 5" wide with brass strip
- 2 Plate glass shelves 8' long
- Mirror panelling at rere of shelves 12'9 x 3'
- 1 Fluorescent strip light 13' long
- Black lacquer board panelling on walls 3' high, total length 15'
- 1 Modern occasional table with shelf under, 2' wide
- 1 National card register
- 1 Cash and docket machine

OVER/

COCKTAIL BAR - Continued

- 2 Presentation cups and 1 silver trophy
- 4 Cocktail shakers
- 1 Cocktail trolley, mahogany with wire and brass guard, round top shelf and fitted cane basket with 21 compartments as bottom shelf
- 1 Venetian blind to fit window 8'6" long
- 1 Concealed fluorescent light 8'6" long
- 5 Low occasional circular tables with wererite tops 2' diameter
- 5 Square glass ashtrays
- 1 Service table 2' long
- 1 Metal waste-paper basket
- 1 Wire basket
- 1 Cash box
- 1 Wooden grill protector for radiator
- 1 Teak roller shutter with 2 bolts to fit doorway 6'6" x 2'9"
- 1 Teak roller shutter with 2 bolts to fit archway to lounge 10' x 5'
- 1 Flower vase with decorative basket
- Door to glass pantry - Yale lock, 1 glass panel.

VALUE: £:500: - :-

GLASSWARE

- 30 Cocktail glasses
- 15 Double whisky glasses
- 33 Heavy glasses
- 71 Restaurant glasses
- 28 Whisky glasses
- 28 Sherry glasses
- 11 Lager glasses
- 24 Maple balloon glasses
- 4 Apple balloon glasses
- 9 Tea glasses
- 12 New glasses
- 20 Milk glasses
- 6 Large carafes
- 8 Small carafes
- 11 Water jugs

VALUE: £:750: - :-

GLASS PANTRY

(Plan reference No 62)

- 1 Door from passage complete with circular glass panel
- 2 Oxidised lever handles
- 1 Window pole
- 1 Extension telephone, complete
- 1 Double stainless steel sink unit 8' long complete with chromium self-mixing taps
- 1 Work top 3'6" long, stainless steel
- 2 Cupboards under with sliding doors
- 1 Ashbin
- 2 Coal scuttles
- 1 Large zinc bucket
- 1 Lemon squeezer
- 1 Strip light 4' long
- 1 Electric bell unit
- 1 Set shelves, five, 5' wide
- 7 Ornamental vases
- 1 Length teak panelling, full-length at rere of sink and draining-board
- Miscellaneous ferns
- 1 Cupboard off pantry with:-
 - 1 electric light point
 - 1 Yale lock on door
 - 6 shelves 3' long
 - 3 ornamental silver trophies on stands

GLASSWARE

- 30 Cocktail glasses
- 14 Tomatoe juice glasses
- 33 Sherry glasses
- 71 Restaurant glasses
- 28 Whiskey glasses
- 28 Claret glasses
- 11 Licquer glasses
- 24 Single balloon glasses
- 8 Double balloon glasses
- 9 Port glasses
- 16 Stout glasses
- 20 Hock glasses
- 6 Large carafs
- 8 Small carafs
- 11 Water jugs

VALUE: £:175: - : -

DISPENSE BAR

(Plan reference No 63)

- 1 Lino on floor with felt under, 9' x 12'
- 1 Circular electric light fitting, complete
- 15 Wine baskets for full bottles
- 5 Wine baskets for half bottles
- Fitted shelving on three walls giving 206 bins
- Miscellaneous shelves
- 3 Paragon docket machines
- 1 Hot-point electric refrigerator, 11 cubic feet with trays, ice boxes, etc.
- 1 Unpainted table 3' x 2'6"
- 2 Two-bar electric radiators
- 1 Small cane waste-paper basket
- 1 Diningroom chair. Type C
- 1 Metal single door safe, 2'3" x 1'4" x 1'4"
- 1 Double door to passage with serving shelf and Yale lock
- 12 Misc. ledgers
- 1 Cigar display cabinet
- 1 Lemon squeezer
- 2 Inkwells

VALUE: £:300: - : -

PASSAGE TO STAFF DININGROOM

- 1 Lino on floor 20' x 4'
- 3 Twig brushes
- 1 Mop
- 1 Central light point with glass shade

STAFF DINING ROOM

(Plan reference No 64)

- 1 Lino on floor with felt under 12'6" x 11'
- 1 pr Material curtains 7'6" high on railway runners with pleated pelmet to match
- 1 pr Half-length net curtains on wire spring
- 1 Opaque electric light fitting, complete
- 1 Suite three-tier mahogany dumb waiters on castors 3' long
- 1 Suite three-tier mahogany dumb waiters on castors 3'6" long
- 1 Serviette box
- 1 Cutlery basket
- 10 Oak diningroom chairs. Type B
- 1 Mahogany bedroom chair. Type B
- 1 Automatic door closer
- 1 Coat hook
- 1 Kitchen table 6' x 2'6" with heavy oilskin top.
- 1 Table cloth

VALUE: £:200: - : -

- 33 Cotton napkins
- 51 Table-cloths 5' sq.
- 31 Table cloths 3' sq.
- 15 Table cloths 5' x 7'
- 19 Misc. table cloths and trolley covers
- 12 Table cloths 12' x 5'
- 21 Tablecloths 9' x 5'
- 1 Buffet cloths 9' x 3'
- 2 Banquet cloths 12' x 5'
- 4 Banquet cloths 7' x 5'
- 1 Banquet cloth 15' x 5'
- 46 Waiter's hand cloths
- 7 Table tops
- 8 Trolley cloths

OVER/

LINEN ROOM

(Plan reference No 65)

- Door Furniture: 1 chromium coat hook, 1 automatic door spring, Excelsior.
- Lino on floor
- 1 Half-length net curtain on wire spring
- 2 Printed linen curtains, lined, 7' long on railway runners
- 1 Additional railway runner
- 4 Fitted cupboards 7'6" high to ceiling, complete with locks and keys
- 1 Electric fire in metal case, 2-bar, complete
- 1 Alarm clock in metal case
- 1 Mahogany chest of drawers 3' long with 3 long drawers, contents:
 - 8 miscellaneous ledgers
 - 1 clothes brush
 - 3 rulers
- 5 Roller blinds, 4' long
- 3 Laundry baskets with lids, 2'3", 2'6", 2'9"
- 1 Laundry cane basket without lid
- 1 Round opaque glass light fitting, 2 bulbs
- 1 Bedroom chair. Type B
- 1 Diningroom chair. Type B
- 1 Singer Sewing Machine, table type with foot treadle and top cover, misc. equipment
- 1 Small sweeping brush
- Furniture on outside door: 1 small brass bolt, 2 heavy bolts

LINEN

- 253 single sheets
- 2 Small double sheets
- 15 Medium double sheets
- 39 Large double sheets
- 12 Under-pillow slips
- 5 Ticken pillow covers
- 57 Single pillow slips
- 27 Bolser covers (4' x 20")
- 29 Bed valances
- 1 Folk weave double bedspread (8'6" x 7')
- 8 Pink silk bedspreads
- 7 Single folk-weave bedspreads (8' x 5')
- 3 Single yellow silk bedspreads
- 4 Single blankets, white with blue borders
- 7 Single yellow blankets
- 2 Folk-weave bedspreads

Table linen etc.:

- 312 Table napkins 2' sq. white woven design with Russell in centre
- 53 Cotton napkins
- 51 Table-cloths 5' sq.
- 31 Table cloths 3' sq.
- 15 Table cloths 5' x 7'
- 19 Misc. table cloths and trolley covers
- 12 Table cloths 12' x 5'
- 21 Tablecloths 9' x 5'
- 4 Buffet cloths 9' x 5'
- 2 Banquet cloths 12' x 5'
- 4 Banquet cloths 7' x 5'
- 1 Banquet cloth 15' x 5'
- 46 Waiter's hand cloths
- 7 Table tops
- 8 Trolley cloths

OVER/

LINEN - Continued

- 7 Restaurant cloths for shelves, straight (4' x 1'4")
- 2 Restaurant cloths for shelves, shaped, (3'6" x 1')
- 8 Restaurant cloths for shelves with shaped ends (4' x 1'3")
- 2 Linenbread cloths
- 12 Plate cloths 2' x 3'
- 12 Glass cloths
- 36 Tray cloths
- 22 Table felts in different sizes (Av. 6' sq.)

Curtains and chair covers:

- 21 Linen chairbacks 3'6" square
- 38 Linen chair-arm covers
- 7 Cushions
- 149 Half-length net curtains
- 1 Small net curtain
- 3 prs Small net curtains
 - Length of material for chair covering (10' x 4'3")
 - Length of curtain material 4'6" x 4'3"
 - Length of smaller material
- 4 Loose chair covers
- 2 prs Folk-weave curtains and 3 pelmets
- 1 Chintz curtain and pelmet
- 1 pr Printed linen curtains, lined with 2 pelmets
- 1 pr Yellow brocade curtains, 2 pelmets
- 1 Odd beige coloured curtain
- 1 Bundle material for chair covers
- 8 Linen print floral design chair armlets
- 83 Chair tops complete with 7" zip for chairs in lounge
- 30 Seat covers - heavy material
- 1 Large floral design curtain
- 13 Cushion covers
- 1 pr Small floral curtains
- 16 Linen chair backs
- 33 Linen chair armlets
- 1 Large floral design curtain

Towels and misc. linen:

- 107 Linen face towels
- 12 Towelling bath mats
- 1 Tufted bath mat
- 33 Linen-hand towels for Ladies toilets
- 5 Table-cloths for Gents toilets (5' x 6')
- 29 Linen toilet towels with loops
- 30 Best bath towels
- 18 Bath towels - tufted design (3' x 5')
- 23 Medium-sized bath towels
- 2 Small-bath towels
- 19 Still-room maid's caps
- 38 Narrow linen dressing table runners
- 12 Medium linen dressing table runners 1" wide
- 4 Wide linen dressing table runners 1 1/2" wide
- 38 Small square table mats or pedestal mats
- 24 Waiters' aprong with tapes 3'6" sq.

OVER/

LINEN - Continued

- 17 Kitchen aprons with tapes 3'6"
- 34 Roller towels, linen, 7' x 1'5"
- 8 Trolley towels, linen, 3'6" x 1'
- 3 Cotton pastry chef's serviettes, 1'9" sq.
- 6 Chef's neckties
- 10 Bar cloths, misc. sizes
- 9 Linen kitchen cloths 1'9" x 2'6"
- 28 Linen kitchen cloths 2' x 3"
- 1 Ironing blanket
- 17 Porter's aprons, light material with shaped tops and strings

Linen in use in Diningroom:

- 28 Table cloths
- 13 Table tops
- 1 Large table top
- 60 Linen napkins
- 2 Large trolley cloths
- 1 Buffet cloth 9' x 5'
- 5 Restaurant cloths
- 1 Bar cloth
- 6 Glass cloths

- 2 Hotel flags, red background with white lettering
- 11 National flags

Contents of cupboard:

- 1 Syringe type disinfectant sprayer
- 2 Bottles Romesoll fluid
- 2 Bottles Johnston's wax polish
- 1 Bottle Flit
- 2 Bottles shoe whitening
- 1 Hotpoint electric iron with flex and plug
- 40 Jeyes toilet paper packets
- 2 Rolls toilet paper
- 1 First aid kit with Flexoplast
- 3 Bandages
- 1 Bottle iodine
- 1 Bottle aspirin
- 1 Bottle Airwick
- 1 Clothes brush
- 1 Box Christmas decorations with lights, cards, paper chains, presents, etc.

VALUE: £:2 00 - : -

PRINCIPAL STAIRCASE

(Plan reference No 66)

- Lino on ground floor with felt under,
15' x 4'6" (12' x 8'6")
- 1 Core mat 3' wide
- 1 Framed painting - Raymond McGrath
- 1 Wrought iron hanging light fixture with
glass droplets, 4 electric candles
and shades

Stairs to first floor:

- 1 Indian carpet 3' wide x 23 yards with felt
- 19 Circular brass stair rods with 2 fittings
each.
- 1 Electric light fitting on half-landing
with 4 x candles and single shade

TELEPHONE LOBBY

VALUE: £:235: -

(Plan reference No 67)

- 1 Patterned hair-cord strip carpet 12' x 3'6"
Lino surround
- 1 Central opaque circular ceiling fitting.
- 1 Circular occasional table with plate-glass
top.
- 1 Polished oak hall seat with stave back, 4'
- 1 Wall mirror with serrated edges 4' x 1'3"
- 1 Shaped ornamental plate
- 1 Screen incorporating counter and swing door
with 2 glass finger plates and 1 hook
- 1 Curtain, 10' long
- 2 Double coat hooks
- 1 Two-bar electric radiator, complete
- 1 Circular electric light fitting, complete
- 13 Miscellaneous telephone directories
- 7 Miscellaneous account books
- 1 Box file
- 1 Telephone extension with head-phones and
hand set, 60 extensions.
- 1 Mahogany dining room chair. Type B
- 1 Small wicker waste-paper basket
- 1 Letter rack
- 1 Small vase
- 1 Six-light bell indicator with buzzer switch
- 1 Footstool
- 1 Clothes brush
- 1 Baixe-covered notice board
- 1 Room indicator
- 2 Plastic labels
- 2 Telephone booths each with:
 - 1 Extension telephone, complete
 - 1 Diningroom chair, Type B
 - 1 Painted shelf, 2' long
 - 1 Glass ashtray
 - 1 Aer Lingus message pad
 - 1 Britons automatic door closer
 - 1 Automatic light switch
 - 1 Oxidised bar handle
 - 1 Plate glass finger plate
 - 1 Small brass door handle, inside

VALUE: £:425: - : -

LADIES REST ROOM

(Plan reference No 68)

- 1 Fitted patterned carpet with felt under, 14' x 12' (84' x 2'3")
- 2 Pedestal Twyford green Wash hand basins, 25" wide, complete
- 2 Hand brushes
- 3 Glass ashtrays
- 1 Mahogany chest drawers 2'5" with 3 long drawers and claw ball feet
- 1 pr Printed cotton curtains 5' long with pelmet to match, on railway runners
- 1 pr Net curtains on brass bar
- 1 Wall mirror, 5' x 1' with strip light
- 1 Rubber towel rail 2' long
- 1 Flower vase
- 1 Kidney shaped dressing table 3'6" wide with plate glass top and material side covers and top with frill
- 1 Dressing table stool with padded seat
- 1 Oval wood-framed wall mirror
- 2 Ornamental wall electric lights, torch design with bulbs and shades, compl.
- 1 Wall mirror 3'3" x 7'
- 1 Mahogany-lined umbrella stand
- 1 Fireside chair with loose cover and back
- Door Furniture: 1 glass finger plate, 2 metal bars

CLOAKROOM

- Lino on floor 7'6" x 6'6"
- Strip carpetting 6' long
- 1 Central circular light fitting
- 1 Briton door closer
- 17 Double coat hooks
- 1 Mahogany occasional table. Type A
- 1 Glass ashtray
- 1 Dining room chair. Type B

TOILETS

- Lino on floor
- 2 Shaped rubber mats
- 2 Low--type combination W.C.'s with seats and covers
- 2 Waste cannisters
- 2 Jeyes toilet paper holders
- 2 Brass ashtrays
- 2 Electric light fittings, complete
- Door Furniture: 2 brass bolsts and signs
- 2 china door knobs

VALUE: £:375: - : -

LANDING "I"

(Plan reference No 69)

- 1 Fitted Wilton crimson coloured strip carpet 50' x 2'3" with felt under
- 1 pr Lined striped material curtains, 8' long on railway runners with pelmet to match
- 1 pr Full-length spotted muslin curtains on wire spring
- 2 Metal wall brackets supporting 2 electric candles and shades, complete
- 4 Double light bell indicators

Stairs:

- 10 Yards carpetting to match
- Rubber felts under

CUPBOARD UNDER STAIRS

- 3 Spare collapsible trunk rests
- 1 "Erin" Fire Extinguisher on wall bracket
- 3 Small wooden trays
- 1 Electric light point, complete

VALUE: £:200: - : -

- 1 Wardrobe unit with overlapping boarding and panels 6' wide, 3 pr. doors, 1 compartment with internal mirror, 2 expanding clothes racks, internal light and automatic switch, 2 collapsible trunk rests, 2 shelves, 7 sliding trays, additional hanging compartment with extending clothes rack
- 1 Beside cabinet with overlapping boarding and panels 18" square, with 1 shelf and 2 benches
- 1 Dressing table unit, with 2 deep drawers, three shelves and circular compartment, one full-length swinging mirror
- 1 Writing table 2'9" long with 2 drawers and papering legs
- 1 Wrought iron wall bracket with 2 electric candle lights and shades, complete
- 1 pr Small table lamp with plaster base and material shade, complete
- 1 Large table
- 1 Metal waste-paper basket
- 1 Bedroom chair - Type B
- 1 Bedroom chair - easy
- 1 Glass ashtrays
- 1 Stationary folder, complete
- 1 Extension telephone, complete
- 1 Double bell unit with releases
- 1 Door Furniture: 2 knobs and 1 key-hole cover, key-holder, brass number.

VALUE: £1600: - : -

GUEST BEDROOM NO. 6

(Plan reference No 70)

- 1 Green Wilton strip carpet (65' x 2'3")
with felt under
- 1 pr Lined brocade curtains, peach coloured,
8' long on railway runners with draped
-pelmet to match
- 1 pr Full-length spotted muslin curtains on
wire spring
- 1 Pedestal Wash hand basin 24" wide, complete
Black Vitralite splash-back 5" x 25"
Mirror over 2'9" x 25", strip light
in chromium brackets, 1 plate glass
shelf 1'3" long with chromium brackets,
2 ½-pint glass tumblers, 2 bath and 2
- face towels.
- 2 Two-bar chromium swinging towel rails
- 1 Fitted rubber mat 3' long
- Bed unit: 10' wide with head-board with
2 projecting side shelves and 2 shelves
at back, 2 interior sprung divan bases
each with cover over and pleated
valances to match curtains, complete
with bedclothes, 1 overall bed cover
with fitted shaped sides and separate
bolster cover
- 1 Wardrobe unit with overlapping boarding and
panels 6' wide, 2 prs. doors, 1 compart-
ment with internal mirror, 2 expanding
clothes racks, internal light and
automatic switch, 2 collapsible trunk
rests, 2 shelves, 7 sliding trays,
additional hanging compartment with
extending clothes rack
- 1 Bedside cabinet with overlapping boarding
and panels 14" square, with 1 shelf and
2 bedchambers
- 1 Dressing table unit, with 2 deep drawers,
three shelves and circular compartment,
one full-length swinging mirror
- 1 Writing table 2'9" long with 2 drawers and
tapering legs
- 1 Wrought iron wall bracket with 2 electric
candle lights and shades, complete
- 1 pr Small table lamps with plaster base and
material shade, complete
- 1 Larger ditto.
- 1 Metal waste-paper basket
- 1 Bedroom chair - Type D
- 1 Bedroom chair - easy
- 2 Glass ashtrays
- 1 Stationary folder, complete
- 1 Extension telephone, complete
- 1 Double bell unit with releases
- Door Furniture: 2 knobs and 1 key-hole
cover, key-holder, brass number.

VALUE: £:600: - :-

GUEST BEDROOM NO. 7

(Plan reference No. 71)

- 1 Lime green Wilton strip carpet with felt under (55' x 2'3")
- 1 pr Lined green brocade curtains 8' long on railway runners with shaped pelmet to match
- 1 pr Spotted muslin curtains on wire spring
Bed unit: panelled head 3'6" wide x 2'9", bed with wooden platform divan base on ball castors with fitted cover of linen and pleated material frill, complete with bedclothes, 1 fitted green material frilled bed cover, 1 pillow cover with shaped ends to match
- 1 Side shelf unit 7'6" long, panelled below, 1 shelf 3' high
- 1 Bedside table with shelf under 16" square
- 1 Wardrobe unit incorporating entrance to bathroom, 1 compartment fitted with 2 shelves and 7 sliding drawers, 2 compartments fitted as hanging cupboard with central bar, 4 hangers, full-length mirror, 1 collapsible trunk rest.
- 1 Fitted dressing table 4'6" long, tapering at one end with 3 small drawers and tapering legs
- 1 Dressing table mirror with oval centre mirror and 2 side mirrors
- 1 Dressing table stool, crossed legs and loose padded seat
- 1 Bedroom chair. Type D
- 1 Table lamp with plaster base and material shade, complete
- 1 Large table lamp, same
- 1 Wrought iron wall bracket fitted with 2 electric candle shades, complete
- 1 Dual-purpose bell unit with flex
- 2 Small glass ashtrays
- 1 Stationary folder, complete
- 1 Small metal material covered waste-paper basket with fringe
- 1 Extension telephone, complete
- Door Furniture: ornamental brass - 2 door handles, 1 keyhole cover, 2 finger plates.

VALUE: £:425: - : -

GUEST BATHROOM ADJOINING NO. 7

(Plan reference No 71A)

- 1 Fitted rubber tiles, approximately 10' x 4'6"
- 1 Heavy porcelain towel rail 15" long
- 1 Cream-coloured Bidet, complete with spray.
- 1 inset china soap-holder
- 1 Low-shaped bath 6' long, complete.
Fitted Vitralite surround 9' long with
double china soap dish, bell push, end
unit incorporating toilet paper holder
- 1 Bath mat, 1 face and 1 bath towel, 1 toilet
- towel.
- 1 Two-bar chromium swinging towel rail
- 1 Chromium towel rail on 2 brackets 2'6" long
- 1 Black Vitralite shelf on brackets 2'3" long
- 1 Half-pint glass tumbler
- 1 Cream-coloured Twyford pedestal Wash hand
basin 24" wide, complete
- 1 Black Vitralite splash-back 24" x 6" with
mirror over 33" x 24"
- 2 Cylindrical light brackets with opaque glass
shades, complete
- 1 Cream-coloured Tyford lowtype combination
W.C. with chromium handle and plastic
seat and cover
- Door Furniture: 2 chromium hangers, 1 door
stop and automatic catch.

VALUE: £:225: - : -

- 1 Table lamp with chrome base and glass
with material covered shade
- 2 Small lamps with curved plaster case and
plated material shade, complete
- 1 Strip light behind panel, 31" long
- 1 Internal telephone, complete
- 1 Material covered wastepaper basket
- 2 Small square glass ashtrays
- 1 Stationary folder, complete
- 1 Double bell with complete with released
- 1 Furniture on door in conventional brass: 2 knobs
2 finger plates, 2 keyhole covers

- 1 Plain crimson Wilton, strip carpet with felt
under (12' x 2'6")
- 1 Central glass light fitting, complete
- 1 Door Furniture: 1 small brass bolt, 2 finger
plates, 2 knobs, 1 keyhole cover, 2
knobs.

VALUE: £120: - : -

GUEST BEDROOM NO. 8

(Plan reference No 72)

- 1 Plain crimson fitted Wilton carpet with felt under (73' x 2'3")
- 1 pr Lined brocade curtains, 8' long on railway runners with gathered pelmet to match
- 1 pr Full-length spotted muslin curtains on wire spring
- Bed unit: 10' wide with head-board with 2 projecting sides and 2 shelves at back, 2 interior sprung divan bases each with cover over and pleated valances to match curtains, complete with bedclothes, 1 overall bed cover with fitted shaped sides, 1 separate bolster cover.
- 1 Wardrobe 6' long with 3 doors. Right hand compartment fitted with 2 shelves, 7 sliding drawers; left hand side with double compartment, 2 doors, 1 full-length internal mirror, automatic strip light, door stays and wooden hanging bar complete with 8 hangers, 2 collapsible trunk & rests.
- 1 Dressing table 5'6" wide with 4 drawers and 6 tapering legs
- 1 Three-fold dressing table mirror
- 1 Dressing table stool with padded bare seat
- 1 Bedroom chair. Type D
- 1 Easy chair - standard
- 1 Table lamp with china column base 2' high with material covered shade, complete
- 2 Small lamps with carved plaster base and pleated material shade, complete
- 1 Strip light behind pelmet, 3' long
- 1 Internal telephone, complete
- 1 Material covered waste-paper basket
- 2 Small square glass ashtrays
- 1 Stationary folder, complete
- 1 Double bell unit complete with releases
- Furniture on door in ornamental brass: 2 knobs
2 finger plates, 2 keyhole covers

LOBBY

- 1 Plain crimson Wilton strip carpet with felt under (12' x 2'3")
- 1 Central glass light fitting, complete
- Door Furniture: 1 small brass bolt, 2 finger plates, 2 knobs, 1 keyhole cover, 2 numbers.

VALUE: £:640:- :-

GUEST BATHROOM ADJOINING NO. 8

(Plan reference No. 72A)

- 1 Fitted rubber floor covering 54 square ft.
- 1 Pedestal Wash hand basin 24" wide, complete
 - Black Vitralite splash-back 6" x 25"
 - Mirror over 2'9" x 25"
- 2 Opaque glass cylindrical wall lights, complete
- 1 Chromium towel rail
- 1 chromium swinging towel rail with 2 bars
- 1 Twford lowtype combination unit with Bake-
lite seat and cover
- 1 Bath 5'6" long with solid side, complete
 - Black Vitralite splash-back 1'6" high
 - with soap holder, 1' long, bell unit,
 - black Vitralite end incorporating
 - toilet paper holder
- 1 Bidet complete with spray
- 1 Heavy porcelain towel rail 1'3" long
- 1 Vitralite shelf 2'3" wide with chromium
brackets
- 2 Half-pint glass tumblers
- 2 Face towels
- 2 Bath towels
- 1 Toilet towel
- Door Furniture: 2 painted door knobs, 1 brass
bolt, 1 painted finger plate, 3 chrom-
ium hooks

VALUE: £:225:- :-

VALUE: £:225:- :-

GUEST BEDROOM NO. 2

(Plan reference No 73)

- 1 Green Wilton strip carpet with felt under, (60' x 2'3")
- 1 Fitted rubber mat
- 1 pr Lined brocade curtains, gold and rose, 8' long on railway runners with shaped pelmet to match
- 1 pr Full-length spotted muslin curtains on wire spring
- 1 Pedestal Wash hand basin 31" wide, complete
Black Vitralite splash-back 6" x 31"
Mirror over 2'9" x 31", 1 strip light,
- 2 Side shelves, black Vitralite on chromium brackets 13" long.
- 2 Swinging chromium towel rails, 2 bars each
- 2 Half-pint glass tumblers
- 2 Bath towels and 2 face towels
- Bed unit: 4'6" wide with panelled head 2½" wooden platform, divan base with interior sprung mattress, complete with bedclothes, 1 bed cover with side panels and separate bolster cover, all to match curtains.
- 1 Fitted Wardrobe 6' wide with 2 prs. doors, 1 compartment fitted with internal mirror, 2 expanding clothes racks, internal light and switch, 2 collapsible trunk rests, 2 shelves, 7 sliding trays
Additional hanging compartment with extending clothes rack and strip light with automatic switch
- 1 Dressing table 3'9" wide, modern design, 2 drawers tapering inwards and legs tapering outwards. Fitted shaped mirror 1'9" wide
- 1 Dressing table stool with padded seat to match.
- 1 Fitted bedside cabinet, 1 bedchamber
- 1 Fitted writing table, supported on single leg.
- 2 Small bedside tables 16" square with shelf under
- 1 Bedroom chair. Type D
- 1 Easy chair - standard
- 1 Inset circular ceiling electric light
- 1 Strip light behind pelmet 3' long
- 1 Table lamp with carved plaster base with pleated material shade, complete
- 1 Internal telephone, complete
- 2 Small square glass ashtrays
- 1 Material metal waste-paper basket
- 1 Double bell unit, complete
- 1 Stationary folder, complete
- Door Furniture: ornamental brasswork -
2 brass finger plates, 2 door knobs,
1 key-hole cover, brass bolt, 1 brass number.

VALUE: £:600: - : -

HOTEL RUSSELL

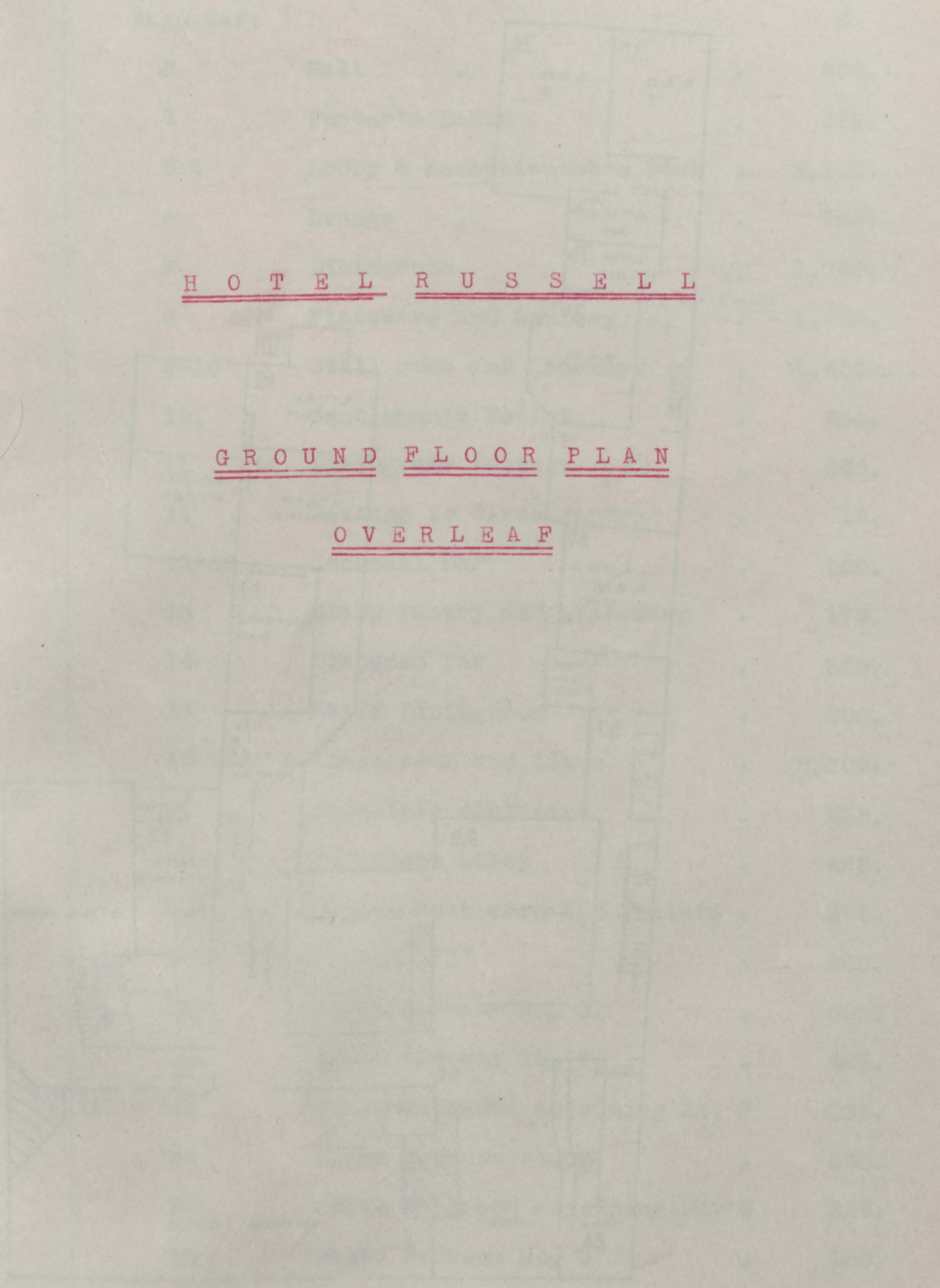
FLOOR LAYOUT

REFERENCE NUMBERS SHOWN
AROUND ON STAIRS POINT DOWNWARDS

H O T E L R U S S E L L

G R O U N D F L O O R P L A N

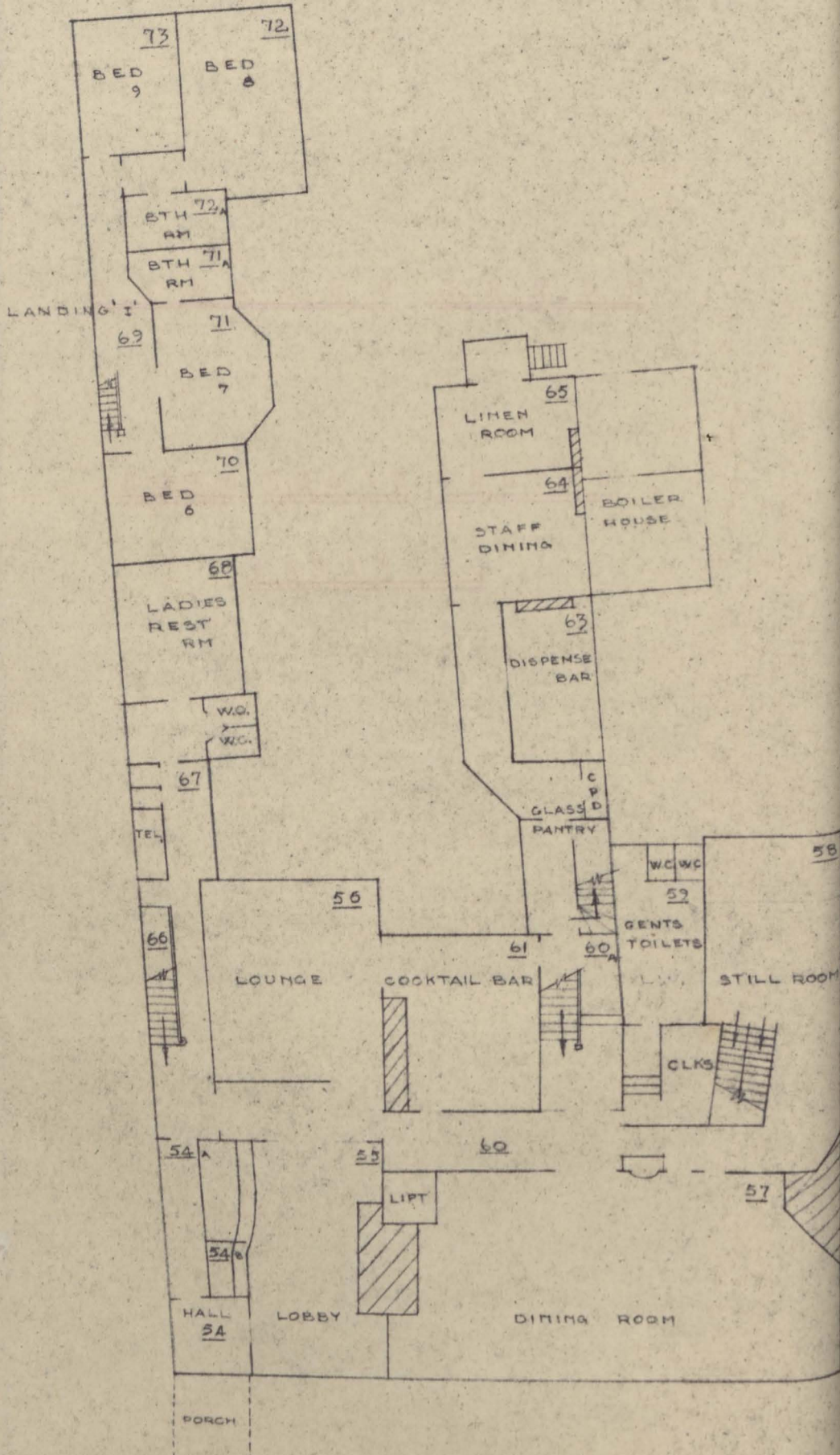
O V E R L E A F



HOTEL RUSSELL

FLOOR LAYOUT

REFERENCE NUMBERS SHOWN 1
ARROWS ON STAIRS POINT DOWNWARDS



GROUND FLOOR PLAN

H O T E L R U S S E L LVALUATION SUMMARYGROUND FLOOR

Page Ref:		£
4	Hall .	300.
4	Porter's Lobby .	350.
5-6	Lobby & Receptionist's Desk .	3,100.
6	Lounge .	700.
7	Diningroom .,	1,750.
8	Plateware and Cutlery .	1,050.
9-10	Still room and Crockery .	1,050.
10.	Gentlemen's Toilet .	230.
11	Diningroom Passage .	260.
11	Passage to Glass Pantry .	15.
11-12	Cocktail Bar .	500.
13	Glass Pantry and glassware .	175.
14	Dispense Bar .	300.
14	Staff Diningroom .	200.
15-17	Linen room and linen .	2,200.
18	Principle staircase .	235.
18	Telephone Lobby .	425.
19	Ladies Rest room and Toilets .	375.
20	Landing "I" .	200.
21	Guest Bedroom No. 6. .	600.
22	Guest Bedroom No. 7. .	425.
23	Guest Bathroom adjoining No. 7 .	225.
24	Guest Bedroom No. 8. .	640.
25	Guest Bathroom adjoining No. 8 .	225.
26	Guest Bedroom No. 9 .	600.

Total: £13,340.